

Located in South Bend, Indiana, **JB Products** has manufactured products for the conventional plumbing wholesale, manufactured housing, recreational vehicle, and OEM/repackager markets for over 40 years.



Many JB Products are listed by one of the following regulatory agencies:



Please call us at 800.527.8727 or speak with your local JB Products manufacturer representative if you have questions or visit our websites at www.jb-products.com or www.jb-signature.com



Plastic Tubular	3-10
Bayonet Threadless Tubular	11-13
JB Solutions	14-26
Bathwastes	27-47
Brass Tubular	48-55
Commercial	56-58
Kitchen & Bar Strainers	59-62
JB Signature	63-76
Accessories	77-87
Chemicals	88-92

TABLE OF CONTENTS



PLASTIC TUBULAR

P-Traps with Marvel Adapter

Reducing washer included.

Item #	Description	Qty
802PVCBG	1-1/2" P-Trap White with Marvel Adapter, bagged	50
802PVCBX	boxed	25
802DPVCBG	with Box Flange, bagged	25
802DPVCBX	with Box Flange, boxed	25
802GPVCBG	with two Rubber Washers, bagged	50
802PVCBG1	with ABS Marvel, bagged	25
802NPVCBG	with Economy Wing Nuts, bagged	50
802NPVCBX	with Economy Wing Nuts, boxed	25
802YPVCBG	with Hook Style J-Bend, bagged	50
802TPVCBG	1-1/2" P-Trap White, Flanged Arm and Marvel Adapter, bagged	50
802TGPVCBG	with three Rubber Washers, bagged	50



801ABSBG	1-1/2" P-Trap Black with Marvel Adapter bagged	50
801ABSBX	boxed	25
801RABSBG	with Rubber Washers, bagged	50
801NABSBG	with Economy Wing Nuts, bagged	50
801YABSBG	with Hook Style J-Bend, bagged	50
801TGABSBG	with Rubber Washers, bagged	50



P-Traps with Solvent Weld Adapter

Traps have a PVC or ABS wall arm and solvent weld adapter.

804PVCBG	1-1/2" P-Trap White with PVC Glue Adapter bagged	50
804PVCBX	boxed	25
804DPVCBG	with Box Flange, bagged	25



P-Traps 1-1/4"

Traps have non-winged slip nuts. Traps below with a Marvel adapter, have a 1-1/2" x 1-1/4" poly reducing washer.

813PVCBG	1-1/4" P-Trap White bagged	50
813PVCBX	boxed	25
813DPVCBX	with Box Flange, boxed	25
813PVCBG2	with PVC Marvel and reducing washer, bagged	50



813ABSBG	1-1/4" P-Trap Black bagged	50
----------	----------------------------	----

P-Traps 1-1/2" with Reducing Wall Arm

Wall arm gradually reduces from 1-1/2" at the J-bend down to 1-1/4" od at the outlet end.



814PVCBG

Item #	Description	Qty
814PVCBG	1-1/2" P-Trap White, Reducing Arm, bagged	50
814PVCBX	boxed	25
814ABSBG	1-1/2" P-Trap Black, Reducing Arm, bagged	50

Plated Plastic P-Traps

Ideal for pedestal lavatories. Economical option to expensive metal traps. Finishes include high luster chrome and our new Brushed Nickel finish.



A808

A808	CP with PVC Marvel Adapter and Box Flange	25
A808B	CP with ABS Marvel Adapter and Box Flange	25
A807	CP with Reducing Arm to 1-1/4" (with metal Box Flange)	25
B808	Brushed Nickel with PVC Marvel Adapter and Box Flange	25

S-Traps

816PVCBG	1-1/2" S-Trap White with Marvel, bagged	25
816PVCBX	boxed	25
816DPVCBX	with Box Flange, boxed	25

816ABSBG	1-1/2" S-Trap Black with Marvel, bagged	25
----------	---	----

817PVCBG	1-1/2" S-Trap PVC Weld Adapter, bagged	25
817PVCBX	Weld Adapter, boxed	25

818PVCBG	1-1/4" S-Trap White no adapter, bagged	25
818PVCBX	no adapter, boxed	25



816PVCBG



810PVCBG



806PVCBG



805PVCBG

Wall Arms

7-1/2" from center of the bend to end.

820PVC	1-1/4" Wall Arms White	25
--------	------------------------	----

812PVC	1-1/2" Wall Arms White	25
812ABS	Black	25
811PVC	PVC	25



811PVC

J-Bends 1-1/2"

Includes nuts and poly washers.

810PVCBG	J-Bend White, bagged	25
810ABSBG	J-Bend Black, bagged	25

Sink Traps

Solvent weld Sch 40 elbow. Includes nuts, poly washer and reducing washer.

806PVCBG	Sink Trap White with PVC Sch 40 Elbow, bagged	25
----------	---	----

Repair Traps

Slip joint outlet. Includes nuts, poly washer and reducing washer.

805PVCBG	Repair Trap White with PVC SJ Outlet, bagged	25
----------	--	----

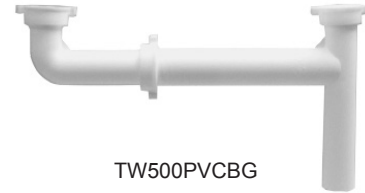
End Outlet Wastes Telescopic

Adjustable to 16" center to center. Universals include short tailpieces.

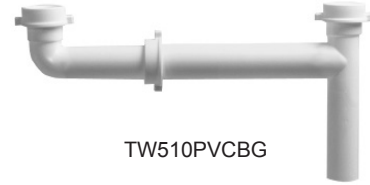
Item #	Description	Qty
TW500PVCBG	1-1/2" x 16" White Direct Connect, bagged	25
TW500PVCBX	boxed	25
TW500ABSBG	1-1/2" x 16" Black Direct Connect, bagged	25

TW510PVCBG	1-1/2" x 16" White Slip Joint, bagged	25
TW510PVCBX	boxed	25
TW510GPVCBG	with rubber washers, bagged	25
TW51021PVCBG	1-1/2" x 21" White Slip Joint, bagged	25
TW510ABSBG	1-1/2" x 16" Black Slip Joint, bagged	25
TW510ABSXB	boxed	25

TW510UPVCBG	1-1/2" x 16" White Universal, bagged	25
TW510UPVCBX	boxed	25
TW510UABSBG	1-1/2" x 16" Black Universal, bagged	25
TW510UABSXB	boxed	25



TW500PVCBG



TW510PVCBG



T510UPVCBG

End Outlet Wastes Economy

Non-telescopic. Universals include short tailpieces.

T530YPVCBG	1-1/2" x 16" White Direct Connect, bagged	25
T530YPVCBX	boxed	25
T530YABSBG	1-1/2" x 16" Black Direct Connect, bagged	25
T530YABSXB	boxed	25

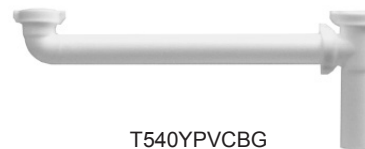
T540YPVCBG	1-1/2" x 16" White Slip Joint, bagged	25
T540YPVCBX	boxed	25
T540Y21PVCBG	1-1/2" x 21" White Slip Joint, bagged	25
T540Y21PVCBX	boxed	25
T540Y21GPVCBG	with rubber washers, boxed	25

T540YABSBG	1-1/2" x 16" Black Slip Joint, bagged	25
------------	---------------------------------------	----

T540YUPVCBG	1-1/2" x 16" White Universal, bagged	25
T540YUPVCBX	boxed	25
T540YUABSBG	1-1/2" x 16" Black Universal, bagged	25



T530YPVCBG



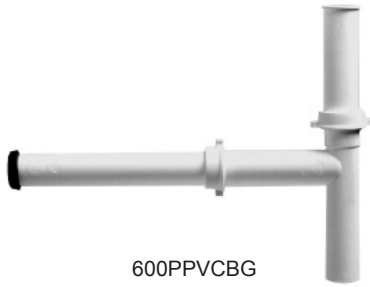
T540YPVCBG



T540YUPVCBG

Disposal Wastes Telescopic

Includes both 6" and 10" tailpieces and disposal connection washer. Tee has a baffle.

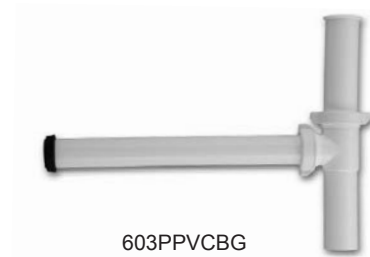


600PPVCBG

Item #	Description	Qty
600PPVCBG	Telescopic Disposal Waste White, bagged	25
600PPVCBX	boxed	25
600GPVCBG	with rubber washers, bagged	25
600PABSBG	Telescopic Disposal Waste Black, bagged	25
600PABSBX	boxed	25
600GABSBG	with rubber washers, bagged	25
60512PVCBG	Telescopic Disposal Waste White, bagged with 5/8" od condensation drain	15

Disposal Wastes Economy

Includes both 6" and 10" tailpieces and disposal connection washer. Tee has a baffle.



603PPVCBG

603PPVCBG	Economy Disposal Waste White, bagged	25
603PPVCBX	boxed	15
603GPVCBG	with rubber washers, bagged	25
603PABSBG	Economy Disposal Waste Black, bagged	25

End Outlet Wastes with Dishwasher Branch

Adjustable up to 16" center to center. DC is direct connect, SJ is slip joint and Universal will work both ways and includes short flanges.



T500DS34PVCBG

T500DS34PVCBG	1-1/2" x 16" White DC, 3/4" spout, bagged	15
T500DS34PVCBX	with 3/4" spout, boxed	15
T500DS12PVCBG	with 1/2" spout, bagged	15
T500DS12PVCBX	with 1/2" spout, boxed	15
T500DS34ABSBG	1-1/2" x 16" Black DC, 3/4" spout, bagged	15
T500DS12ABSBG	with 1/2" spout, bagged	15



T510DS34PVCBG

T510DS34PVCBG	1-1/2" x 16" White SJ, 3/4" spout, bagged	15
T510DS12PVCBG	with 1/2" spout, bagged	15
T510DS12PVCBX	with 1/2" spout, boxed	15
T510DS34ABSBG	1-1/2" x 16" Black SJ, 3/4" spout, bagged	15



T510DSU34PVCBG

T510DSU34PVCBG	1-1/2" x 16" White Univ. 3/4" spout, bagged	15
T510DSU34PVCBX	with 3/4" spout, box	15
T510DSU12PVCBG	with 1/2" spout, bagged	15
T510DSU12PVCBX	with 1/2" spout, box	15
T510DSU34ABSBG	1-1/2" x 16" Black Univ. 3/4" spout, bagged	15
T510DSU12ABSBG	with 1/2" spout, bagged	15

Center Outlet Wastes

Universal wastes include short flanged tailpieces.

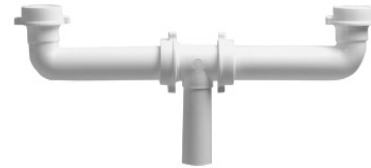
Item #	Description	Qty
TW515PVCBG	1-1/2" x 16" White Direct Connect, bagged	25
TW515PVCBX	boxed	25
TW515ABSBG	1-1/2" x 16" Black Direct Connect, bagged	25
TW515ABSXB	boxed	25

TW516PVCBG	1-1/2" x 16" White Slip Joint, bagged	25
TW516PVCBX	boxed	25
TW5161PVCBX	1-1/2" x 21" White Slip Joint, boxed	25
TW516ABSBG	1-1/2" x 16" Black Slip Joint, bagged	25
TW516ABSXB	boxed	25

TW516UPVCBG	1-1/2" x 16" White Universal, bagged	25
TW516UPVCBX	boxed	25
TW516UABSXB	1-1/2" x 16" Black Universal, bagged	25



TW515PVCBG



TW516PVCBG



TW516UPVCBG

Waste Arms Direct Connect

Includes 1-1/2" flanged washer. 20" and longer arms are ABS or PVC material.

5011NPVC	Waste Arm, DC White 1-1/2" x 7"	25
5041YPVC	1-1/2" x 9-1/2"	25
5042PVC	1-1/2" x 11-1/2"	25
5044YPVC	1-1/2" x 15"	25

5011BB	Waste Arm, DC Black 1-1/2" x 7"	25
5041YABS	1-1/2" x 9-1/2"	25
5044YABS	1-1/2" x 15"	25



5010WB



5110PVC

Waste Arms Slip Joint

Includes 1-1/2" slip joint washer. 20" and longer arms are ABS or PVC material.

5111PVC	Waste Arm, SJ White 1-1/2" x 7"	25
5110PVC	1-1/2" x 8"	25
5131PVC	1-1/2" x 9-1/2"	25
5132PVC	1-1/2" x 11-1/2"	25
5134YPVC	1-1/2" x 15"	25
5135PVC	1-1/2" x 20" PVC	25
5136PVC	1-1/2" x 24" PVC	25

5111ABS	Waste Arm, SJ Black 1-1/2" x 7"	25
5110ABS	1-1/2" x 8"	25
5131YBB	1-1/2" x 9-1/2"	25
5134ABS	1-1/2" x 15"	25

Plastic Baffle Tees

EO is end outlet. CO is center outlet. DC is direct connect, SJ is slip joint. Includes nuts and washers.

503YPVC	EO Tee DC White	25
503YABS	Black	25
512YPVC	EO Tee SJ White	25
512YABS	Black	25

515PVC	CO Tee SJ White	25
515ABS	Black	25



512YPVC



515PVC



520YPVC

Slip Tees 3 Way

Includes nuts and both 1-1/2" and 1-1/4" reducing washers.

520YPVC	1-1/2" Tee White	25
---------	------------------	----

Slip Extensions

Includes both standard and reducing washers, where applicable.

Item #	Description	Qty
9164PVC	Slip Extension White 1-1/4" x 6"	25
9184PVC	1-1/4" x 12"	25



9164PVC

916PVC	Slip Extension White 1-1/2" x 6"	25
917PVC	1-1/2" x 8"	25
914PVC	1-1/2" x 10"	25
918PVC	1-1/2" x 12"	25
918GPVC	with rubber washers	25



9194PVC

916ABS	Slip Extension Black 1-1/2" x 6"	25
917ABS	1-1/2" x 8"	25
918ABS	1-1/2" x 12"	25

9194PVC	Dual Slip Extension White 1-1/4" x 16"	25
919PVC	1-1/2" x 16"	25
919GPVC	with rubber washers	25
9194ABS	Dual Slip Extension Black 1-1/4" x 16"	25
919ABS	1-1/2" x 16"	25

Flanged Tailpieces

Bulk packaged in boxes. All tailpieces are available in both PVC and ABS on a special order basis.

Item #	Description	Qty
900PVC	Flanged Tailpiece White 1-1/2" x 4"	25
901PVC	1-1/2" x 6"	25
902PVC	1-1/2" x 8"	25
907PVC	1-1/2" x 10"	25
903PVC	1-1/2" x 12"	25
904PVC	Double Flanged Tlpc White 1-1/2" x 16"	25
905PVC	Short Tailpiece PVC 1-1/2" x 1-7/8"	25



901PVC



904PVC

900ABS	Flanged Tailpiece Black 1-1/2" x 4"	25
901ABS	1-1/2" x 6"	25
902ABS	1-1/2" x 8"	25
903ABS	1-1/2" x 12"	25
904ABS	Double Flange Tlpc Black 1-1/2" x 16"	25
905ABS	Short Tailpiece ABS 1-1/2" x 1-7/8"	25

Air Gaps

UPC approved.

8126	Dishwasher Air Gap with Chrome Cap	50
8127	with Top Hat Style CP Cap	50
8128	with CP Cap, LA Code Approved, Turquoise body	50



8126



8127



902DS34PVC



917DS34PVC



917U12PVC

Branch Tailpieces

Branch tailpieces all 1-1/2" x 8".

DC is direct connect, SJ is slip joint and Universal will work both ways.

902DS34PVC	White DC Branch Tlpc with 3/4" spout	25
902DS12PVC	with 1/2" spout	25
902DS34ABS	Black DC Branch Tlpc with 3/4" spout	25
902DS12ABS	with 1/2" spout	25

917DS34PVC	White SJ Branch Tlpc with 3/4" spout	25
917DS12PVC	White SJ Branch Tlpc with 1/2" spout	25
917DS34ABS	Black SJ Branch Tlpc with 3/4" spout	25
917DS12ABS	with 1/2" spout	25

917U34PVC	White Universal Tlpc with 3/4" spout	25
917U12PVC	with 1/2" spout	25
917U34ABS	Black Universal Tlpc with 3/4" spout	25
917U12ABS	with 1/2" spout	25

Slip Nuts

Item #	Description	Qty
201PVC	1-1/2" Deluxe Wing Nut White	100
201ABS	Black	100



201NPVC	1-1/2" Economy Wing Nut, White	100
---------	--------------------------------	-----



201YPVC	1-1/2" Slip Nut, White	100
202PVC	1-1/4" Slip Nut, White	100
202ABS	Black	100



Marvel Adapters

Includes nuts and washers.

850PVC	PVC Marvel Adapter	25
850ABS	ABS	25



212	Red Test Cap Only	25
850WT	Adapter with red Cap	25



Solvent Weld Adapters

860PVC	PVC Solvent Weld Adapter	25
--------	--------------------------	----



Box Flanges Plastic

Standard box flange measures 1-5/8" high x 2-7/8" od.

Deep box flange measures 2-1/4" high x 3-1/8" od.

880PVC	1-1/2" Deep Box Flange White	25
--------	------------------------------	----



Double Offsets

Includes both 1-1/2" and 1-1/4" reducing washers.

526PVC	1-1/2" PVC Dual Offset	25
526ABS	1-1/2" ABS Dual Offset	25



Slip Joint Couplings

1-1/2" includes nuts and washers.

Item #	Description	Qty
930PVC	Long Coupling White	25



Slip Elbows

Includes nuts and washers.

523PVC	1-1/2" 45° Slip Elbows White	25
523ABS	Black	25



521YPVC	1-1/2" 90° Slip Elbows White	25
521YABS	Black	25



Washers

311B	1-1/4" x 1-1/4" Poly	100
301B	1-1/2" x 1-1/4" Poly	100
300B	1-1/2" x 1-1/2" Poly	100
308B	Tailpiece Washer Poly	100



300RXB	1-1/2" x 1-1/2" Rubber Washer	100
301YRB	1-1/2" x 1-1/4" Rubber Washer	100
34W251AB	Tailpiece Washer Cloth Inserted Rubber (1094I)	100
302B	Tailpiece Washer Rubber	100
1064	Tailpiece Washer Cloth Inserted	100
317BT	Bayonet Rubber Reducing Washer	25



303B	Disposal Connector	25
------	--------------------	----



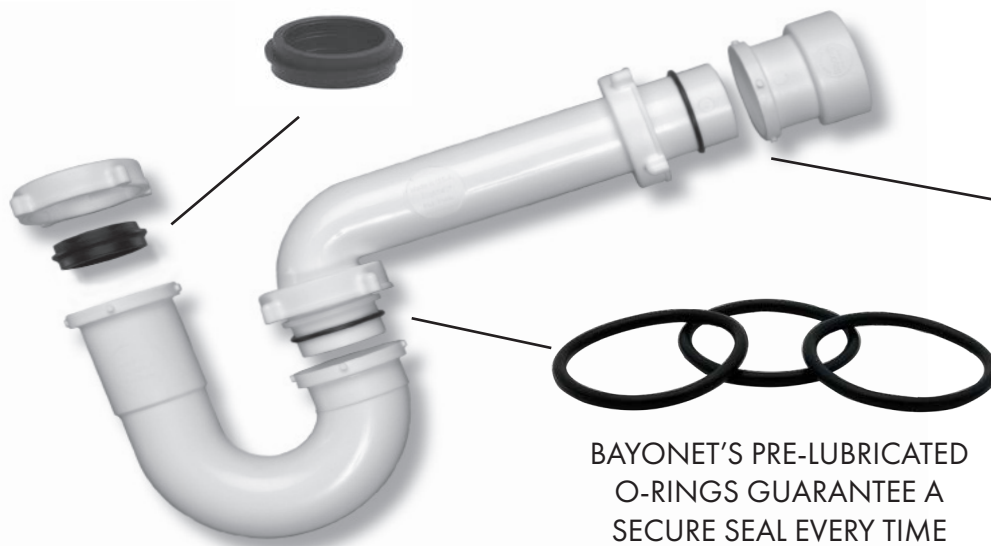


BAYONET TUBULAR

Bayonet's Turn and Lock System

Saves Time & Eliminates Leaks

USE THE BAYONET REDUCER BUSHING FOR THE 1 1/4" CONNECTIONS



BAYONET'S PRE-LUBRICATED O-RINGS GUARANTEE A SECURE SEAL EVERY TIME

THE TONGUE AND GROOVE DESIGN GUIDES THE BAYONET NUTS INTO THE PIPE FOR A QUICK AND ERROR-FREE CONNECTION



Bayonet installs in minutes!

Load



Turn



and Lock



THE PATENTED TURN AND LOCK SYSTEM INSTALLS IN JUST MINUTES, SAVING TIME AND MONEY.

SIMPLY PLACE THE NUT AND O-RING OVER THE PIPE AND A QUARTER TURN IS ALL IT TAKES FOR A SECURE LEAK-FREE CONNECTION.



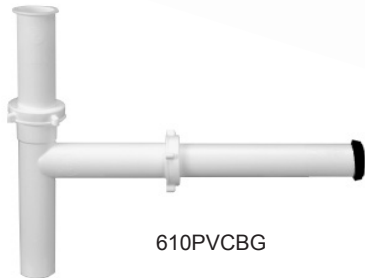
837PVCBG

Bayonet P-Traps

Patented Bayonet system is quick and easy. 1-1/2" traps include a Bayonet reducing bushing, Bayonet marvel adapter and O-rings.

Item #	Description	Qty
837PVCBG	Bayonet P-Trap White with PVC Bayonet Marvel, bagged	25
837PVCBX	boxed	25
837PVCBG1	with Bayonet ABS Marvel Adapter, bagged	25

837ABSBG	Bayonet P-Trap Black with ABS Bayonet Marvel, bagged	25
837ABSBX	boxed	25



610PVCBG

Bayonet Disposal Waste Kits

Bayonet disposal waste kit includes, 6" and 10" tailpieces, disposer connection washer and Bayonet nuts and O-rings. The waste arm is telescopic.

610PVCBG	Bayonet Disposal Waste Kit White, bagged	25
610PVCBX	boxed	25



91734PVCBT

Bayonet Dishwasher Branch Tailpiece

1-1/2" x 8" with Bayonet slip joint connection.

91734PVCBT	Bayonet Dishwasher Branch Tailpiece White with 3/4" spout	25
------------	---	----



919PVCBT

Bayonet Double Slip Extension

Includes Bayonet nuts and O-rings.

919PVCBT	1-1/2" x 16" Bayonet Double Slip Extension Tube White	25
919ABSBT	1-1/2" x 16" Bayonet Double Slip Extension Tube Black	25



317BT



208W

Bayonet Components

KIT830WBT	Bayonet Kit, pair of nuts and O-rings White, bagged	25
317BT	Bayonet Rubber Reducer Bushing 1-1/2" x 1-1/4"	25
316PC	Bayonet O-rings, 25 per bag and 100 per box	100



JB SOLUTIONS

FIRE RATED PRODUCTS



Fire Rated Boxes

Hybrid Metal Jacket with Intumescent Pad
 Center-Drain, Dual-Drain & Top Mount Configurations
 Poly Valves: Lead Free
 Brass Valves: Low Lead Compliant
 Available with or without arresters
 CPVC, F1960 PEX, PEX, and MIP connections
 Fire Rated ABS with 2" Drain knock-out
 ASSE 1010; NSF 61; NSF 14; ASME A112.18.1
 E814 and CAN/ ULC S-115
 Add "R" for Round Frame - Add "AG" for Ayrgap
 Add "CP" to end of part number for contractor pack
 Add "PDD" for pre-installed Dual Drain
 EP= Engineered Polymer Valves



Description	Material	CPVC	F1960	PEX	MIP	Qty
Multi-Pro	EP Gold	JBSFR2081	JBSFR2082	JBSFR2083		10
Multi-Pro	EP, Red & Blue	JBSFR5081	JBSFR5082	JBSFR5083		10
Multi-Pro with Arrester	EP Gold	JBSFR2281	JBSFR2282	JBSFR2283		10
Multi-Pro with Arrester	EP, Red & Blue	JBSFR5281	JBSFR5282	JBSFR5283		10
Twin Box with Drain; assembled	EP Gold	JBSFR2071DB	JBSFR2072DB	JBSFR2073DB		10
Twin Box with Drain; assembled	EP, Red & Blue	JBSFRB071DB	JBSFRB072DB	JBSFRB073DB		10
Twin Box with Drain with Arrester; assembled	EP Gold	JBSFR2271DB	JBSFR2272DB	JBSFR2273DB		10
Twin Box with Drain with Arrester; assembled	EP, Red & Blue	JBSFRB271DB	JBSFRB272DB	JBSFRB273DB		
Small-N-One Box; assembled, top-mount	EP Gold	JBSFR2071	JBSFR2072	JBSFR2073		
Small-N-One Box with Arresters; assembled, top-mount	EP Gold	JBSFR2271	JBSFR2272	JBSFR2273		
Ice Maker Box; assembled; Brass Outlet	EP Gold	JBSFR3081	JBSFR3082	JBSFR3083		
Ice Maker Box with Arrester; assembled; Brass Outlet	EP Gold	JBSFR3281	JBSFR3282	JBSFR3283		
Multi-Pro	Brass	JBSFR7081	JBSFR7082	JBSFR7083	JBSFR7084	
Multi-Pro with Arrester	Brass	JBSFR7581	JBSFR7582	JBSFR7583	JBSFR7584	
Twin Box with Drain; assembled	Brass	JBSFR7071DB	JBSFR7072DB	JBSFR7073DB	JBSFR7074DB	
Twin Box with Drain with Arrester; assembled	Brass	JBSFR7571DB	JBSFR7572DB	JBSFR7573DB	JBSFR7574DB	
Small-N-One Box; assembled, top-mount	Brass	JBSFR7071	JBSFR7072	JBSFR7073	JBSFR7074	
Small-N-One Box with Arresters; assembled, top-mount	Brass	JBSFR7571	JBSFR7572	JBSFR7573	JBSFR7574	
Ice Maker Box; assembled; Brass Outlet	Brass	JBSFR6001	JBSFR6002	JBSFR6003	JBSFR6004	
Ice Maker Box with Arrester; assembled; Brass Outlet	Brass	JBSFR6501	JBSFR6502	JBSFR6503	JBSFR6504	

WASHING MACHINE BOXES

Multi-Pro™

Multiple valve mounting options

Dual and center drain

Available Colors: Gold or Red & Blue

All valves are low lead compliant and non-corrosive

All poly valves sold with debris caps for 3/4" hose connection

CPVC, F1960 PEX, PEX, and MIP connections

Add "CP" to end of part number for contraction pack

Add "PCD" for Center Drain

Add "PDD" for Dual Drain

ASSE 1010; NSF 61; NSF 14; ASME A112.18.1



Description	Material	CPVC	F1960	PEX	MIP	Qty
Multi-Pro Wash Box with EP Valves	EP Gold	JBS2081	JBS2082	JBS2083		10
Multi-Pro Wash Box with EP Valves	EP Red & Blue	JBSRB081	JBSRB082	JBSRB083		10
Multi-Pro Wash Box with EP Valves & Arresters	EP Gold	JBS2281	JBS2282	JBS2283		10
Multi-Pro Wash Box with EP Valves & Arresters	EP Red & Blue	JBSRB281	JBSRB282	JBSRB283		10
Multi-Pro Wash Box with Brass Valves	Brass	JBS7081	JBS7082	JBS7083	JBS7084	10
Multi-Pro Wash Box with Brass Valves & Arresters	Brass	JBS7581	JBS7582	JBS7583	JBS7584	10

WASHING MACHINE BOXES

Small-N-One

Small footprint - Most economical option
Utilizes same face as Ice Maker & Twin Box
Used for top mount applications
For 3/4" Hose Connection
Non corrosive, lead free
CPVC, F1960 PEX, PEX, and MIP connections
Add "CP" to end of part number for contraction pack
ASSE 1010; NSF 61; NSF 14; ASME A112.18.1
Available pre-assembled only. Valves are quarter turn



Description	Material	CPVC	F1960	PEX	MIP	Qty
Small-N-One Box with EP Valves	EP Gold	JBS2071	JBS2072	JBS2073		10
Small-N-One Box with EP Valves & Arresters	EP Gold	JBS2271	JBS2272	JBS2273		10
Small-N-One Box with Brass Valves	Brass	JBS7071	JBS7072	JBS7073	JBS7074	10
Small-N-One Box with Brass Valves & Arresters	Brass	JBS7571	JBS7572	JBS7573	JBS7574	10

WASHING MACHINE BOXES

Twin Box

Over the stud application
 Flexible installation and configurations
 All poly valves sold with debris caps
 CPVC, F1960 PEX, PEX, and MIP connections
 Add "CP" to end of part number for contraction pack
 ASSE 1010; NSF 61; NSF 14; ASME A112.18.1
 Pre-assembled non-corrosive engineered polymer valves
 Available Colors: Gold or Red & Blue
 Also available with metal brass valves



Description	Material	CPVC	F1960	PEX	MIP	Qty
Twin Box with EP Valves	EP Gold	JBS2071DB	JBS2072DB	JBS2073DB		10
Twin Box with EP Valves	EP Red & Blue	JBSRB071DB	JBSRB072DB	JBSRB073DB		10
Twin Box with EP Valves & Arresters	EP Gold	JBS2271DB	JBS2272DB	JBS2273DB		10
Twin Box with EP Valves & Arresters	EP Red & Blue	JBSRB271DB	JBSRB272DB	JBSRB273DB		10
Twin Box with Brass Valves	Brass	JBS7071DB	JBS7072DB	JBS7073DB	JBS7074DB	10
Twin Box with Brass Valves & Arresters	Brass	JBS7571DB	JBS7572DB	JBS7573DB	JBS7574DB	10

WASHING MACHINE BOXES

JBSAYRGAP Wash Box with Condensate Line

High flow 1" air-gap for condensate lines
 Poly Valves Lead Free; Brass Valves Low Lead Compliant
 Available with or without arresters
 CPVC, F1960 PEX, PEX, and MIP connections
 Add "CP" to end of part number for contraction pack
 2" Drain knock-out
 ASSE 1010; NSF 61; NSF 14; ASME A112.18.1
 Fire Rated Available E814 and CAN/ULC S-115



Only available in dual drain

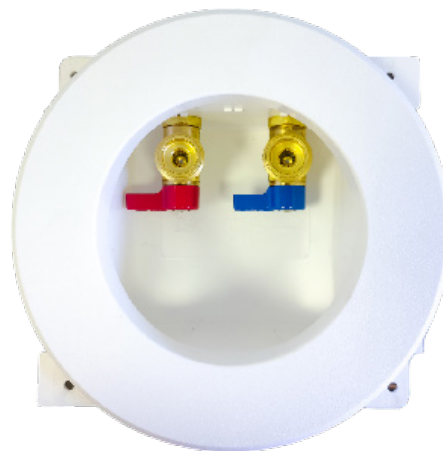


Description	Material	CPVC	F1960	PEX	MIP	Qty
Center Drain JBSAYRGAP Multi-Pro with Gold colored Poly Valves	EP Gold	JBS2081AG	JBS2082AG	JBS2083AG		10
Center Drain JBSAYRGAP Multi-Pro with Gold colored Poly Valves w/ Hammer Arresters	EP Gold	JBS2281AG	JBS2282AG	JBS2283AG		10
Center Drain JBSAYRGAP Multi-Pro with Red & Blue Poly Valves	EP, Red & Blue	JBSRB081AG	JBSRB082AG	JBSRB083AG		10
Center Drain JBSAYRGAP Multi-Pro with Red & Blue Poly Valves w/ Hammer Arresters	EP, Red & Blue	JBSRB281AG	JBSRB282AG	JBSRB283AG		10
Center Drain JBSAYRGAP Multi-Pro with Brass Valves	Brass	JBS7081AG	JBS7082AG	JBS7083AG	JBS7084AG	10
Center Drain JBSAYRGAP Multi-Pro with Brass Valves w/ Hammer Arresters	Brass	JBS7581AG	JBS7582AG	JBS7583AG	JBS7584AG	10
JBSAYRGAP without box - 1" High Flow Air-Gap Condensate		JBSAYRGAP				10

WASHING MACHINE BOXES

Small-N-One Wash Boxes with Round Frame

Poly valve with brass 3/4" connection
 Poly Valves: Lead Free
 Brass Valves: Low Lead Compliant
 Available with or without arresters
 CPVC, F1960 PEX, PEX, and MIP connections
 2" Drain knock-out
 ASSE 1010; NSF 61; NSF 14; ASME A112.18.1
 Fire Rated Available E814 and CAN/ULC S-115



Round Box - Poly Valves

Description	Material	CPVC	F1960	PEX	Qty
Small-N-One w/ EP Valves	EP Gold	JBS2071R	JBS2072R	JBS2073R	10
Small-N-One w/ EP Valves & Arresters	EP Gold	JBS2271R	JBS2272R	JBS2273R	10
Small-N-One w/ EP Valves, Fire Rated	EP Gold	JBSFR2071R	JBSFR2072R	JBSFR2073R	10
Small-N-One w/ EP Valves & Arresters, Fire Rated	EP Gold	JBSFR2271R	JBSFR2272R	JBSFR2273R	10

Round Box - Metal Brass

Description	Material	CPVC	F1960	PEX	1/2" MIP	Qty
Small-N-One w/ Brass Valves	Brass	JBS7071R	JBS7072R	JBS7073R	JBS7074R	10
Small-N-One w/ Brass Valves & Arresters	Brass	JBS7571R	JBS7572R	JBS7573R	JBS7574R	10
Small-N-One w/ Brass Valves, Fire Rated	Brass	JBSFR7071R	JBSFR7072R	JBSFR7073R	JBSFR7074R	10
Small-N-One w/ Brass Valves & Arresters, Fire Rated	Brass	JBSFR7571R	JBSFR7572R	JBSFR7573R	JBSFR7574R	10

ICE MAKER BOXES

Ice Maker Boxes

Over the stud application
 Flexible installation and configurations
 All poly valves sold with debris caps
 CPVC, F1960 PEX, PEX, and MIP connections
 Add "CP" to end of part number for contraction pack
 ASSE 1010; NSF 61; NSF 14; ASME A112.18.1
 Pre-assembled non-corrosive engineered polymer valves
 Available Colors: Gold or Red & Blue
 Also available with metal brass valves



Description	Material	CPVC	F1960	PEX	1/2" MIP	Qty
Ice Box with EP Valve; Brass Outlet	EP Gold	JBS3081	JBS3082	JBS3083		10
Ice Box with EP Valve & Arrester; Brass Outlet	EP Gold	JBS3281	JBS3282	JBS3283		10
Ice Box with Brass Valve	Brass	JBS6001	JBS6002	JBS6003	JBS6004	10
Ice Box with Brass Valve & Arrester	Brass	JBS6501	JBS6502	JBS6503	JBS6504	10

ICE MAKER BOXES

Round Ice Maker Valve Boxes

Poly valve with brass 1/4" connection
 Poly Valves: Lead Free
 Brass Valves: Low Lead Compliant
 Available with or without arresters
 Also available with brass valves 1/4" connection
 CPVC, F1960 PEX, PEX, and MIP connections
 Add "CP" to end of part number for contraction pack
 ASSE 1010; NSF 61; NSF 14; ASME A112.18.1
 Fire Rated Available E814 and CAN/ULC S-115



Description	Material	CPVC	F1960	PEX	1/2" MIP	Qty
1/4" Ice Maker Valve Box with Round Frame	EP Gold	JBS3081R	JBS3082R	JBS3083R		10
1/4" Ice Maker Valve Box with Round Frame & Hammer Arrester	EP Gold	JBS3281R	JBS3282R	JBS3283R		10
1/4" Ice Maker Valve Box with Round Frame, Fire Rated	EP Gold	JBSFR3081R	JBSFR3082R	JBSFR3083R		10
1/4" Ice Maker Valve Box with Round Frame & Hammer Arrester, Fire Rated	EP Gold	JBSFR3281R	JBSFR3282R	JBSFR3283R		10
1/4" Ice Maker Valve Box with Round Frame	Brass	JBS6001R	JBS6002R	JBS6003R	JBS6004R	10
1/4" Ice Maker Valve Box with Round Frame & Hammer Arrester	Brass	JBS6501R	JBS6502R	JBS6503R	JBS6504R	10
1/4" Ice Maker Valve Box with Round Frame, Fire Rated	Brass	JBSFR6001R	JBSFR6002R	JBSFR6003R	JBSFR6004R	10
1/4" Ice Maker Valve Box with Round Frame & Hammer Arrester, Fire Rated	Brass	JBSFR6501R	JBSFR6502R	JBSFR6503R	JBSFR6504R	10

VALVE BOXES

3-2-1 Valve Box

Poly valve with brass 3/8" connection

Lead Free

Available with or without arresters

CPVC, F1960 PEX, PEX connections

Add "CP" to end of and part number for contraction pack

ASSE 1010; NSF 61; NSF 14; ASME A112.18.1

Fire Rated Available 1 HR & 2 HR Approved E814 and CAN/ULC S-115

Available in engineered poly only



Description	CPVC	F1960	PEX	Qty
3/8" Kitchen/ Dishwasher Supply Box - 3 Valve	JBS4071	JBS4072	JBS4073	10
3/8" Kitchen/ Dishwasher Supply Box w/ Arrester - 3 Valve	JBS4271	JBS4272	JBS4273	10
3/8" Kitchen/ Dishwasher Supply Box - 3 Valve, Fire Rated	JBSFR4071	JBSFR4072	JBSFR4073	10
3/8" Kitchen/ Dishwasher Supply Box w/ Arrester - 3 Valve, Fire Rated	JBSFR4271	JBSFR4272	JBSFR4273	10
3/8" Lavatory Outlet Box - 2 Valve	JBS4471	JBS4472	JBS4473	10
3/8" Lavatory Outlet Box - 2 Valve, Fire Rated	JBSFR4471	JBSFR4472	JBSFR4473	10
3/8" Toilet/ Dishwasher Box - 1 Valve	JBS4671	JBS4672	JBS4673	10
3/8" Toilet/ Dishwasher Box w/ Arrester- 1 Valve	JBS4871	JBS4872	JBS4873	10
3/8" Toilet/ Dishwasher Box - 1 Valve, Fire Rated	JBSFR4671	JBSFR4672	JBSFR4673	10
3/8" Toilet/ Dishwasher Box w/ Arrester- 1 Valve, Fire Rated	JBSFR4871	JBSFR4872	JBSFR4873	10

WATER HAMMER ARRESTERS

Water Hammer Arresters

CPVC, F1960 PEX, PEX, and MIP connections

ASSE 1010; NSF 61; Lead Free

Burst tested to 1200 PSIG

Tees available in F1960 PEX, PEX dishwasher and laundry applications

No access necessary, may be installed at any angle



Item #	Description	Size	Material	Qty
JBSAA45CPM	Water Hammer Arrester 1/2" CPVC Coupling	AA	CPVC	50
JBSAA45MIP	Water Hammer Arrester 1/2" Threaded MIP	AA	CPVC	50
JBSAAA45PEX	Water Hammer Arrester 1/2" Pex Coupling	AA	PPSU	50
JBSAA45PXT	Water Hammer Arrester 1/2" Pex Coupling	AA	PPSU	50
JBSAA45UPW	Water Hammer Arrester 1/2" F1960 Pex Coupling	AA	PSU	50
JBSAA45UPWT	Water Hammer Arrester F1960 Pex Tee Coupling	AA	PSU	50
JBSAA45DCT	Water Hammer Arrester Dishwasher Tee 3/8" OD x 3/8" Comp	AA	Brass	50

AIR ADMITTANCE VALVES

Air Admittance Valves

Certified by ASSE to 1050 and 1051
Listed by IAPMO and NSF 14
Fire Rated Box available



Description	DFU	PVC	ABS	Qty
2" ~ 1 1/2" Solvent Weld	6 DFU	JBSP6	JBSA6	50
2" ~ 1 1/2" with Threaded Adapter	6 DFU	JBSP6T	JBSA6T	50
2" ~ 1 1/2" Solvent Weld	20 DFU	JBSP50	JBSA55	50
2" ~ 1 1/2" with Threaded Adapter	20 DFU	JBSPT300	JBSAT500	50
2" ~ 1 1/2" with Wall Box, Faceplate, & Louvered Cover	20 DFU	JBSPTBOX	JBSATBOX	10
2" ~ 1 1/2" with Wall Box, Faceplate, & Louvered Cover, FIRE RATED	20 DFU	JBSFRPTBOX	JBSFRATBOX	10
2" ~ 1 1/2" Louvered Covered Box Only, no AAV		JBSBOXLC		10
4" ~ 3" Use with no hub, Solvent Weld	500 DFU	JBSA4MAX		10
Carbon Filter 4" OD, Use with no hub		JBSAYRFILTER		10
Carbon Filter Replacement Cartridge		JBSAFC6		10

VALVES & ACCESSORIES

Listings: NSF 14 & 61

All parts are UPC listed

Arrestors are listed by UPC, ASSE 1010, AB1953/ low lead certified, ASME A112.18.1



Valves Only

Description	Material	CPVC	F1960	PEX	Qty
Washing Machine EP Valve Set	EP Gold	JBS5381	JBS5382	JBS5383	10
Washing Machine EP Valve Set	EP Red & Blue	JBSRB381	JBSRB382	JBSRB383	10
Washing Machine EP Valve Set with Arresters	EP Gold	JBS5181	JBS5182	JBS5183	10
Washing Machine EP Valve Set with Arresters	EP Red & Blue	JBSRB5181	JBSRB5182	JBSRB5183	10
Ice Maker EP Valve; Brass Outlet	EP Gold	JBS3381	JBS3382	JBS3383	10
Ice Maker EP Valve with Arrester; Brass Outlet	EP Gold	JBS3181	JBS3182	JBS3183	10

Fire Rated Box & Faceplates

Item #	Description
JBSFR2900	Wash Machine Box and Faceplate
JBSFR2999	Wash Machine Faceplate
JBSFR3900	Ice Maker Box and Faceplate
JBSFR3901	Small In One Box and Faceplate
JBSFR3902	Utility/ Drain Box and Faceplate
JBSFR3903	Fire Rated Shut Off Box, 1 1/4"
JBSFR3999	Faceplate Only, Fits Ice Maker, Small In One, and Utility/ Drain Box

Ice Maker, Twin, Utility Box & Faceplates

Item #	Description
JBS3900	Ice Maker Box and Faceplate
JBS3901	Small In One Box and Faceplate
JBS3902	Utility/ Drain Box and Faceplate
JBS3903	Shut Off Box, 1 1/4"
JBS3999	Faceplate Only, Fits Ice Maker, Small In One, and Utility/ Drain Box

Multi-Pro Box & Faceplates

Item #	Description
JBS2900	Multi-Pro Washing Machine Box and Faceplate
JBS2999	Multi-Pro Faceplate



BATHWASTES

Half Kits PVC Lift & Turn

Two hole CP face plate and CP zinc strainer with 3/8" thread is standard.

Special finish drains have 3/8" threaded stems. Non testable head.

Add "M" for CP brass strainer.

Add "S" for single hole face plate.

Add "X" to end of part number for 2-1/4" face plate screws.

Add "H" for condensation head.

Item #	Description	Qty
745PVCBG	Half Kit PVC Lift & Turn 3/8" stem CP, bagged	20
745PVCBX	boxed	20
745PVCBGX	with 2-1/4" screws, bagged	20
745SPVCBG	with one hole face plate, bagged	20
745SPVCBX	with one hole face plate, boxed	20
745PVCBG1	with cartridge packaged seperately, bagged	20
745PVCUK	with test kit, boxed	20
745HPVCBG	with Condensation Head, bagged	20

743PVCBG	Half Kit PVC Lift & Turn 3/8" stem CP, bagged	20
743PVCBX	boxed	20
743SPVCBG	with one hole face plate, bagged	20
743SPVCBX	boxed	20
743PVCBGX	with 2-1/4" screws, bagged	20
743PVCBXX	boxed	20

745PVCSNBG	Half Kit PVC Lift & Turn Brushed Nickel, bagged	20
743PVCSNBX	boxed	20
745SPVCSNBG	with one hole face plate, bagged	20
743HPVCSNUK	with Condensation Head, bagged	20
743SPVCFBBK	Half Kit PVC Lift & Turn Flat Black, breakaway head, boxed	
743PVCORBG	Half Kit PVC Lift & Turn Oil Rubbed Bronze, bagged	20
743PVCORBX	boxed	20
743PVCVBBG	Half Kit PVC Lift & Turn Tuscan Bronze, bagged	20
743PVCVBBX	boxed	20
743PVCCBBG	Half Kit PVC Lift & Turn Classic Bronze, bagged	20
743PVCCBBX	boxed	20
743SPVCBBUKBX	Brushed Bronze, single hole half kit w/ universal test kit	20
743SBBBX	Half Kit Lift & Turn Brushed Bronze, Single Hole, boxed	20

743PVDBG	Half Kit PVC Lift & Turn PVD Polished Brass, bagged	20
743PVDBX	boxed	20
745WPVCBG	Half Kit PVC Lift & Turn White trim, bagged	20
745WPVCBX	boxed	20
745WSPVCBX	with one hole face plate, boxed	20

743WRK	Rough-in Kit PVC Lift & Turn CP with test plug	20
743WRBK	Rough-in Kit PVC Breakaway Head Lift & Turn CP with test plug	20
743HWRK	Rough-in Kit PVC Lift & Turn CP Condensate Head with test plug	20



745PVCBG



Condensation Head



743WRK

Half Kits PVC Breakaway Head Lift & Turn

Two hole CP face plate and CP zinc strainer with 3/8" thread is standard. The 1/4" thread shoe test plug is metal, all other sizes are plastic. Add "M" for CP brass strainer with 3/8" stem. Add "S" for single hole face plate. Add "H" for condensation head. Add "UK" for wing nut test kit.



745PVCBK



743PVCBK

Item #	Description	Qty
745PVCBKBG	Half Kit Breakaway Head Lift & Turn 3/8" stem CP, bagged	20
745PVCBK	boxed	20
745SPVCBK	with one hole face plate, boxed	20
745PVCBK1	with cartridge packaged separately, bagged	20

743PVCBKBG	Half Kit Breakaway Head Lift & Turn 3/8" stem CP, bagged	20
743PVCBK	boxed	20
743SPVCBK	with one hole face plate, bagged	20
743MPVCBK	with 3/8" stem brass strainer, boxed	20

745PVCSSNBK	Half Kit Breakaway Head Lift & Turn Brushed Nickel, boxed	20
745PVCSSNBX	with one hole face plate, boxed	20
745CBBK	Half Kit Breakaway Head Lift & Turn Classic Bronze, boxed	20
745PVDBK	PVD Polished Brass, boxed	20
745PVCVBBK	Tuscan Bronze, boxed	20
745ORBK	Oil Rubbed Bronze, boxed	20
743SPVCBBBKBK	Brushed Bronze, single hole half kit with universal test kit	20

Half Kits ABS Lift & Turn

Two hole CP face plate and CP zinc strainer with 3/8" thread is standard. The 3/8" thread shoe test plug is metal, all other sizes are plastic. Non testable head. Add "M" for CP brass strainer. Add "S" for single hole face plate. Add "H" for condensation head.



743ABSXB

745ABSBG	Half Kit ABS Lift & Turn CP, bagged	20
745ABSXB	boxed	20
745SABSBG	with one hole face plate, bagged	20
745SABSXB	boxed	20

743ABSBG	Half Kit ABS Lift & Turn CP 3/8" stem, bagged	20
743ABSXB	boxed	20
743ABSUKBG	with universal test kit, CP	20
743MABSBG	with brass strainer, bagged	20
743MABSXB	boxed	20

743ABSSNBG	Half Kit ABS Lift & Turn Brushed Nickel with 3/8" stem, bagged	20
743ABSSNBX	boxed	20
745ABSORBX	Oil Rubbed Bronze, boxed	20
745ABSVBBX	Tuscan Bronze, boxed	20
745ABSPVDBX	PVD Polished Brass, boxed	20

Half Kits ABS Breakaway Head Lift & Turn

Two hole CP face plate and CP zinc strainer with 3/8" thread is standard.
Add "M" for CP brass strainer with 3/8" stem.

Item #	Description	Qty
745ABSBKBG	Half Kit ABS Breakaway Head Lift & Turn 3/8" stem CP, bagged	20
745ABSBK	boxed	20
745SABSBK	with one hole face plate, boxed	20

743MABSBK	Half Kit ABS Breakaway Head Lift & Turn 3/8" stem CP, with Brass strainer, boxed	20
743ABSBKBG	Half Kit ABS Breakaway Head Lift & Turn 3/8" stem CP, bagged	20
743ABSBK	boxed	20
745ABSSNBK	Brushed Nickel, boxed	20
745ABSORBK	Oil Rubbed Bronze, boxed	20



745ABSBK

Half Kits PVC Toe Touch

Two hole CP face plate and CP zinc strainer with 5/16" thread is standard.
Add "M" for CP brass strainer with 3/8" stem.

Add "S" for single hole face plate.

Add "H" for condensation head.

Add "UK" for wing nut test kit.

HW8PVCBG	Half Kit PVC Toe Touch CP, bagged	20
HW8PVCBX	boxed	20
HW8SPVCBG	with one hole face plate, bagged	20
HW8SPVCBX	boxed	20
HW8SPVCUK	with one hole face plate and test kit, boxed	20
HW8BNPVCBG	Half Kit PVC Toe Touch Brushed Nickel, bagged	20
HW8BNPVCBX	boxed	20
HW8SSNPVCUK	with one hole face plate and test kit, boxed	20
HW8PVCNUK	with test kit, boxed	20
HW8PVCVDBG	PVD Polished Brass, bagged	20
HW8PVCVDBX	boxed	20
HW8SPVCVDBX	with one hole face plate, boxed	20



HW8PVCBG

Half Kits ABS Toe Touch

HW8ABSBG	Half Kit ABS Toe Touch CP, bagged	20
HW8ABSBX	boxed	20
HW8SABSBX	with one hole face plate, boxed	20
HW8ABSUK	with test kit, boxed	20

HW8BNABSBG	Brushed Nickel, bagged	20
HW8BNABSBX	boxed	20
HW8SABSSNBX	with one hole face plate, boxed	20
HW8PVDBG	PVD Polished Brass, bagged	20
HW8PVDBX	boxed	20



HW8ABSBG



HW8PVCBK

Half Kits Breakaway Head Toe Touch

Two hole CP face plate with CP zinc strainer, 5/16" thread is standard.

Item #	Description	Qty
HW8PVCBK	Half Kit PVC Breakaway Head Toe Touch CP, boxed	20
HW8SPVCBGBK	with one hole face plate, bagged	20
HW8BNPVCBK	Brushed Nickel, boxed	20
HW8PVCVDBK	PVD Polished Brass, boxed	20
HW8ABSGBK	Half Kit ABS Breakaway Head Toe Touch CP, bagged	20
HW8ABSXBK	boxed	20
HW8SABS BK	with one hole face plate, boxed	20

Half Kits PVC Low Profile Toe Touch

Two hole CP face plate and CP zinc strainer with 3/8" thread is standard.
Add "S" for single hole face plate.

Add "UK" for wing nut test kit.



HW9PVCBX

HW9PVCBG	Half Kit PVC Toe Touch CP, bagged	20
HW9PVCBX	boxed	20
HW9SPVCBX	with one hole face plate, boxed	20
HW9PVCUK	with Test Kit, Chrome Plated	20
HW9SPVCUK	with one hole face plate and test kit, boxed	20
HW9PVC SNBX	Half Kit PVC Toe Touch Brushed Nickel, boxed	20
HW9PVC SNUK	with Test Kit, boxed	20
HW9SPVC SNBX	with one hole face plate, boxed	20
HW9SPVC FBUK	Half Kit Toe Touch, Single Hole, Flat Black w/ Test Kit	
HW9PVCORBX	Oil Rubbed Bronze, boxed	20
HW9PVCVBBX	Tuscan Bronze, boxed	20

Half Kits ABS Low Profile Toe Touch

Two hole CP face plate, CP zinc strainer with 3/8" thread is standard.

HW9ABS BX	Half Kit ABS Toe Touch CP, boxed	20
HW9SABS BX	with one hole face plate, boxed	20
HW9SABS UK	with one hole face plate and test kit, boxed	20

HW9ABS SNBX	Half Kit ABS Toe Touch Brushed Nickel, boxed	20
HW9ABS SNUK	with one hole face plate and test kit, boxed	20
HW9ABS ORBG	Oil Rubbed Bronze, bagged	20
HW9ABS ORBX	boxed	20



HW9PVCBX

Half Kits Breakaway Head Low Profile Toe Touch

Two hole CP face plate, CP zinc strainer with 3/8" thread is standard.

HW9PVCBK	Half Kit PVC Breakaway Low Profile Toe Touch CP, boxed	20
HW9SPVCBK	with one hole face plate, boxed	20
HW9PVC SNBK	Brushed Nickel, boxed	20
HW9SPVC SNBX	Single Hole, Brushed Nickel, Boxed	20
HW9SPVC CBBX	Single Hole, Classic Bronze, Boxed	20
HW9SPVC ORBX	Single Hole, Oil Rubbed Bronze, Boxed	20
HW9ABS BK	Half Kit ABS Breakaway Low Profile Toe Touch CP, boxed	20
BTW8ABS BX	with one hole face plate, boxed	20
HW9ABS SNBK	Brushed Nickel, boxed	20

Half Kits Push & Seal

Two hole face plate and CP brass strainer with 3/8" thread is standard.

Rough-in kits and trim kits are listed at bottom of this category.

Add "S" for single hole face plate.

Add "X" to end of part number for 2-1/4" face plate screws.

Add "H" for condensate head.

Add "UK" for wing nut test kit.

Add "BK" for breakaway test kit, see items listed below.

Item #	Description	Qty
HW35PVCBG	Half Kit PVC Push & Seal CP, bagged	20
HW35PVCBX	boxed	20
HW35PVCBXX	with 2-1/4" screws, boxed	20
HW35SPVCBG	with one hole face plate, bagged	20
HW35SPVCBX	boxed	20
HW35SPVCBNBX	Half Kit PVC Push & Seal Brushed Nickel, boxed	20
HW35SPVCORBX	Oil Rubbed Bronze with one hole face plate, boxed	20
HW35SPVCCBBX	Classic Bronze with one hole face plate, boxed	20
HW35SPVCPBBX	Polished Brass with one hole face plate, boxed	20

HW35ABSBG	Half Kit ABS Push & Seal CP, bagged	20
HW35ABSBX	boxed	20
HW35PVCSNBG	Brushed Nickel, bagged	20
HW35ABSSNBX	boxed	20

HW35SPVCBK	Half Kit PVC Breakaway Head Push & Seal CP with one hole face plate, boxed	20
HW35SPVCBNBK	Brushed Nickel with one hole face plate, boxed	20
HW35SPVCORBK	Oil Rubbed Bronze with one hole face plate, boxed	20
HW35SPVCPBBK	Polished Brass with one hole face plate, boxed	20
HW35ABSBK	Half Kit ABS Breakaway Head Push & Seal CP, boxed	20
HW35SABSBK	with one hole face plate, boxed	20

HW35WRK	Rough-in Kit PVC Breakaway Head Push & Seal CP with test plug	20
HW35BGC	Trim Kit Push & Seal CP with two hole face plate	20
HW35SBGC	with one hole face plate	20
HW35SSNBG1	Push & Seal Trim Kit, Single Hole, w/o Retainer Bar, Brushed Nickel	20

Track Packs Half Kits

Ideal for multi-unit projects requiring pressure testing. No up-charge for Track Packaging, breakaway head is standard. Special finishes also available, call for part numbers.

743PVCBKTP	Track Pack PVC Breakaway Head Lift & Turn CP	15
745SPVCBKTP	with one hole face plate	15
743HPVCTK	Track Pack PVC No Breakaway Head Lift & Turn CP with Condensation Head	15
HW8PVCBKTP	Track Pack PVC Toe Touch CP	15

743ABSBKTP	Track Pack ABS Breakaway Head Lift & Turn CP	15
745SABSBKTP	with one hole face plate	15
HW8ABSBKTP	Track Pack ABS Toe Touch CP	15
HW8SABSBKTP	with one hole face plate	15



HW35PVCBG



743PVCCBKTP

Claw Trim Kits

Includes snap-on face plate, claw and drain cartridge to trim out rough-in kits.



HW24KCB

Item #	Description	Qty
794KCP	Trim Kit Lift & Turn Chrome, bagged	20
794KBN	Brushed Nickel	20
794KOR	Oil Rubbed Bronze	20
794KCB	Classic Bronze	20

HW24KCP	Trim Kit Push & Seal Chrome, bagged	20
HW24KBN	Brushed Nickel	20
HW24KOR	Oil Rubbed Bronze	20
HW24KCB	Classic Bronze	20

Claw Full Trim Kits

Kit includes snap-on face plate, claw, drain cartridge and strainer for a complete trim out of rough-in kits.



JB3686

JB3685	Full Trim Kit Lift & Turn Chrome, bagged	10
JB3686	Brushed Nickel	10
JB3688	Oil Rubbed Bronze	10
JB3687	Classic Bronze	10

HW26KCP	Full Trim Kit Push & Seal CP, bagged	20
HW26KBN	Brushed Nickel, bagged	20
HW26KOR	Oil Rubbed Bronze, bagged	20
HW26KCB	Classic Bronze, bagged	20

HW18KCP	Full Trim Kit Toe Touch CP with Strainer, bagged	20
HW18KBN	Brushed Nickel, bagged	20
HW18KCB	Classic Bronze, bagged	20
HW18KOR	Oil Rubbed Bronze, bagged	20
HW24KCPLS	Push & Seal Trim kit, CP, less screws, bagged	20



712ECBN

Claw Re-Fit Trim Kits

Kit includes snap-on face plate, claw and Re-fit drain cartridge. Re-fit cartridge is an oversized stopper that completely cover drain.

712ECCP	Re-Fit Trim Kit Lift & Turn Chrome, boxed	12
712ECBN	Brushed Nickel	12
712ECOR	Oil Rubbed Bronze	12
712ECCB	Classic Bronze	12
737ECBN	Re-Fit Trim Kit Push & Seal Brushed Nickel	12
737ECCB	Classic Bronze	12

Claw Conversion Kits - Lift & Turn

Kit includes snap-on face plate, claw, 1-1/4" Lift & Turn cartridge, drain strainer and with brass bushing.



JB3681

JB3681	Conversion Kit Lift & Turn Chrome, bagged	10
JB3682	Brushed Nickel	10
JB3680	Oil Rubbed Bronze	10
JB3683	Classic Bronze	10

Claw Conversion Kits Push & Seal

Kit includes snap-on face plate, claw, 1-1/4" Push & Seal cartridge, drain strainer and with brass bushing.

JB3675	Conversion Kit Push & Seal Chrome, bagged	10
JB3676	Brushed Nickel	10
JB3678	Oil Rubbed Bronze	10
JB3677	Classic Bronze	10



Conversion Kits

See more conversion kits in the JB Signature section.

753MZK	Trip Lever Chrome DC 1-1/4" strainer	10
753MZK1	with 1-1/2" Bushing	10
753XK	with 1-1/2" Brass strainer	10

737MK	Push & Seal Chrome with two hole face plate	10
737MSK	with one hole face plate	10
737BNK	Brushed Nickel and longer screws	10
737ORK	Oil Rubbed Bronze and longer screws	10



727MZK	Toe Touch Chrome DC 5/16" stem with two hole face plate	10
731K	Toe Touch CP 3/8" stem with two hole face plate	10

703MZK	Lift & Turn 1-1/4" Chrome DC 3/8" stem with two hole face plate	10
703MZK1	with 1-1/2" bushing and two hole face plate	10
703MZSK1	with 1-1/2" bushing and one hole face plate	10
703MOZK	Lift & Turn 1-1/2" Chrome DC 1/4" stem with two hole face plate	10
703MOZSK	with one hole face plate	10
703MOPK	PVD Polished Brass 3/8" stem, two hole face plate	5
703MOSNK	Brushed Nickel Brass 3/8" stem, two hole face plate	5
703MOSSNK	with one hole face plate	5
703MKOR	Oil Rubbed Bronze Brass 3/8" stem, two hole face plate	10
7374SK	Lift & Turn Trim Kit, Single Hole, CP	10



Trim Kits

7372SBG	Push & Seal Trim Kit, Single Hole, CP	10
737MSORK	Push & Seal Trim Kit, Single Hole, ORB	10
730SK	Toe Touch Trim Kit, Single Hole, CP	10
743BGC	Lift & Turn Trim Kit CP 3/8" stem with two hole face plate	20
743SBG	with one hole face plate and retainer bar	20
743SBGC	Lift & Turn Trim Kit CP 3/8" stem with one hole face plate	20
743SBBBX	Lift & Turn Trim Kit, Single Hole, Brushed Bronze	20
743SFBBX	Lift & Turn Full Trim Kit, Single Hole, Flat Black	20
743SBBBG	Lift & Turn Full Trim Kit, Single Hole, Brushed Bronze	12
743BNBG	Lift & Turn Full Trim Kit, Brushed Nickel	12
743SSNBG	Lift & Turn Trim Kit, Single Hole, Brushed Nickel	20



Re-Fit Kits - Lift & Turn

Available in five finishes. Easy installation with our three size stem and oversize stopper. Great for new construction as well as remodel jobs. Save dollars with the easy installation. Change your one or two hole face plate for a complete new look. For boxed add "X" to part number.



702FKIT

Item #	Description	Qty
702FKIT	Chrome Re-Fit Kit includes face plate and stopper, clam shell	6
702FBNKIT	Brushed Nickel	6
702FCBKIT	Classic Bronze	6
702FORKIT	Oil Rubbed Bronze	6
702FVBKIT	Tuscan Bronze	6

702F	Chrome Re-Fit Kit Cartridge only	1
702FBN	Brushed Nickel	1
702FCB	Classic Bronze	1
702FORB	Oil Rubbed Bronze	1
702FVB	Tuscan Bronze	1

Re-Fit Trim Kit with 3/8" Stem Only



707SBNK

707SBBK	Lift and Turn Re-Fit Trim Kit, 3/8" Stem, Single Hole, Brushed Bronze	1
707SBNK	Lift and Turn Re-Fit Trim Kit, 3/8" Stem, Single Hole, Brushed Nickel	1
707BNK	Lift and Turn Re-Fit Trim Kit, 3/8" Stem, Two Hole, Brushed Nickel	1
707SCBK	Lift and Turn Re-Fit Trim Kit, 3/8" Stem, Single Hole, Classic Bronze	1
707SFBK	Lift and Turn Re-Fit Trim Kit, 3/8" Stem, Single Hole, Flat Black	1
707SORK	Lift and Turn Re-Fit Trim Kit, 3/8" Stem, Single Hole, Oil Rubbed Bronze	10

730RFSBNK	Toe Touch Re-Fit Trim Kit, Single Hole, Brushed Nickel	1
730RFSCBK	Toe Touch Re-Fit Trim Kit, Single Hole, Classic Bronze	1
731RFSFBK	Toe Touch Re-Fit Trim Kit, Single Hole, Flat Black	1

737SFBNKIT	Push & Seal Re-Fit Trim Kit, Single Hole, Brushed Nickel	1
737SFCBKIT	Push & Seal Re-Fit Trim Kit, Single Hole, Classic Bronze	1

Bathwaste Components



792



769



324X



760



324X	Square Cut Foam Overflow Washer	1
304F	Standard Tapered Overflow Washer	1
769	Test Plug for Bathwaste Shoe, 3/8"	1
767	Test Plug for Bathwaste Shoe, 5/16"	1
760	Standard Bathwaste Head Test Kit	1
760K	Sch. 40 Head Test Kit w Shoe Test Plug, 3/8"	1
792	Claw Universal Face Plate Mounting Bracket & Screws	10
R792	Claw Universal Face plate Mounting Bracket only	10
790K	Crossbar and Screws	1
726MSR	Toe Touch Seal Replacement	1

Full Kits - Lift & Turn

CP zinc strainer and two hole face plate is standard. 740 series have 3/8" stems and 742 series has 3/8" stems.

Add "M" for CP brass strainer with 3/8" stem.

Add "S" for single hole face plate.

Add "H" for condensation head.

Add "UK" for wing nut test kit.

Item #	Description	Qty
740PVCBG	Full Kit PVC Lift & Turn CP, bagged	10
740PVCBX	boxed	10
740PVCBGX	with 2-1/4" screws, bagged	10
740SPVCBX	with one hole face plate, boxed	10
740MPVCBG	with Brass strainer, bagged	10
740MOPVCBX	with Brass strainer, boxed	10
740HPVCBG	with Condensation head, bagged	10

740PVCSNBG	Full Kit PVC Lift & Turn Brushed Nickel, bagged	10
740PVCSNBX	Full Kit PVC Lift & Turn Brushed Nickel, boxed	10
740SNPVCBX	boxed	10
740SPVCBBUKBX	Brushed Bronze, single hole full kit, with universal test kit	10
740ORB	Oil Rubbed Bronze, boxed	10
740PVCCBBX	Classic Bronze, boxed	10
740PVDDBG	PVD Polished Brass, bagged	10
742PVCBX	Full Kit PVC Lift & 3/8" stem, boxed	10

742ABS	Full Kit ABS Lift & Turn 3/8" stem CP, bagged	10
742SABS	with one hole face plate, boxed	10

740ABS	Full Kit ABS Lift & Turn CP 3/8" stem, boxed	10
740ABS	Turn Brushed Nickel, boxed	10
740ABS	Oil Rubbed Bronze, boxed	10
740ABS	PVD Polished Brass, boxed	10

Full Kits - Breakaway Head Lift & Turn

740PVCGBK	Full Kit PVC Breakaway Head Lift & Turn CP, bagged	10
740PVCBK	boxed	10
740SPVCBK	with one hole face plate, boxed	10
742SPVCBK	with 3/8" stem and one hole face plate, boxed	10
740SABS	Full Kit ABS Breakaway Head Lift & Turn CP, with one hole face plate bagged	10

742ORB	Full Kit PVC Breakaway Head Lift & Turn, boxed Oil Rubbed Bronze	10
740SPVCBBBK	Brushed Bronze, single hole full kit, with breakaway test kit	10
742PVCVBBK	Tuscan Bronze	10
742PVCVDBK	PVD Polished Brass	10
740SNBK	Brushed Nickel 3/8" stem	10
742SNBK	Brushed Nickel 3/8" stem	10



740PVCBG



740PVCBK

Full Kits - Toe Touch and Push & Seal

Two hole CP face plate and CP zinc strainer with 3/8" thread is standard.

Add "S" for single hole face plate.

Add "H" for condensation head.

Add "UK" for wing nut test kit.

Add "BK" for breakaway test kit.



FW12P



FW35PVCBG

Item #	Description	Qty
FW12PVCBG	Full Kit PVC Toe Touch CP, bagged	10
FW12PVCBX	boxed	10
FW12SPVCBX	with 1 hole face plate, boxed	10
FW12PVCUK	with test kit, boxed	10
FW12PVDBX	Polished Brass, boxed	10
FW12PVCSNBG	Brushed Nickel, bagged	10
FW12PVCSNBX	Brushed Nickel, boxed	10
FW12PVCORBX	Oil Rubbed Bronze, boxed	10
FW12ABSXB	Full ABS Kit Toe Touch CP, boxed	10
FW12ABSPVDBX	PVD Polished Brass, boxed	10
FW12ABSSNBG	Brushed Nickel, bagged	10
FW9PVCBX	Full Kit PVC Low Profile Toe Touch CP, boxed	10
FW9ABSXB	Full Kit ABS Low Profile Toe Touch CP, bagged	10

FW35PVCBG	Full Kit PVC Push & Seal CP, bagged	10
FW35PVCBX	boxed	10
FW35SPVCBK	Full Kit PVC Push & Seal CP Breakaway head with one hole face plate, boxed	10
FW35PVCSNBG	Full Kit PVC Push & Seal Brushed Nickel, bagged	10

Half Kits Direct Drain

CP zinc strainer is standard.

Add "M" for a brass strainer with 3/8" stem

Add "K" for a shoe test Kit.

TW3PVCBG	PVC Toe Touch CP with one hole face plate , bagged	20
TW3PVCBX	boxed	20

BLT2PVCBX	PVC Lift & Turn CP with test kit, boxed	20
-----------	---	----



SW3PVCBG

SW3PVCBG	PVC Push & Seal CP with one hole face plate, bagged	20
SW3PVCBX	boxed	20
SW3PVCUK	PVC Push & Seal CP with one hole face plate and test kit	20
SW3PVDBX	PVD Polished Brass with one hole face plate boxed	20
SW3PVCBNUK	Brushed Nickel with one hole face plate and test kit	20

TW3ABSXB	ABS Toe Touch CP with one hole face plate bagged	20
TW3ABSXBK	with Breakaway head and one hole face plate	20

SW3ABSXB	ABS Push & Seal CP with one hole face plate bagged	20
SW3ABSXBK	with test kit	20

Tubular Bathwastes - Lift & Turn

The overflow tube extends up to 14" and the shoe extends out to 8-1/4" on centers. For a single hole face plate add "S". For condensation head add "H". For wing nut test kit on condensation heads only add "UK".

Item #	Description	Qty
700PVCBG	Tubular White Bathwaste Lift & Turn 3/8" stem CP, bagged	10
700PVCBX	boxed	10
700GPVCBG	with rubber washers, bagged	10
700HPVCBG	with Condensation head, bagged	10
700HPVCBX	boxed	10
700PVCSNBG	Brushed Nickel White PP, bagged	10
700BNPVCBX	boxed	10
700GPVCBDBG	with rubber washers, bagged	10
700ORPVCBX	Oil Rubbed Bronze, boxed	10
700GPVCORB	with rubber washers, bagged	10
700CBPVCBG	Classic Bronze, bagged	10
700CBPVCBX	boxed	10
700GPVCCBBG	with rubber washers, bagged	10
700PVDBG	PVD Polished Brass, bagged	10
700PVDBX	boxed	10
700WPVCBG	White Trim, bagged	10
700SGPVCCBBX	Classic Bronze, single hole, rubber washers, boxed	10
700WPVCBX	boxed	10



700PVCBG



Condensation Head

700ABSBG	Tubular Black Bathwaste Lift & Turn 3/8" stem CP, bagged	10
700ABSBX	boxed	10
700BNABSBX	Brushed Nickel, boxed	10

Tubular Bathwastes - Toe Touch

CP strainers have 5/16" stems, special finishes have 3/8" stems.

725PVCBG	Tubular White Bathwaste Toe Touch CP, bagged	10
725PVCBX	boxed	10
725SPVCBX	with single hole face plate, boxed	10
725BNPVCBG	Brushed Nickel, bagged	10
725BNPVCBX	boxed	10
725SSNPVCBX	with single hole face plate, boxed	10
725ORPVCBG	Oil Rubbed Bronze, bagged	10
725SGPVCCBBX	Classic Bronze, Single Hole, Rubber Washers, boxed	10
725SGSNPVCBX	Brushed Nickel, Single Hole, Rubber Washers, boxed	10
728SGPVCBX	Chrome Plated, Low Profile, Single Hole, boxed	10

725ABSBG	Tubular Black Bathwaste Toe Touch CP, bagged	10
725ABSBX	boxed	10
725ABSBNBG	Brushed Nickel, bagged	10
725ABSBNBX	boxed	10



725PVCBG



728PVCBG

Tubular Bathwastes Toe Touch Low Profile

Two hole CP face plate and CP zinc strainer 3/8" stem is standard.

Item #	Description	Qty
728PVCBG	Tubular White Bathwaste Low Toe Touch CP, bagged	10
728SGPVCBX	with Rubber Washers, boxed	10
728PVCBX	boxed	10
728PVCORB	Oil Rubbed Bronze, bagged	10

728ABSBG	Tubular Black Bathwaste Low Toe Touch CP, bagged	10
728ABSBX	boxed	10

Tubular Bathwastes Push & Seal

Two hole CP face plate and CP zinc strainer with 3/8" stem is standard. Add "H" for condensation head.



735PVCBG

735GPVCNBX	Brushed Nickel, Rubber Washer, Boxed	10
735GPVCBX	CP, Rubber Washers, Boxed	10
735GPVCCBBX	Classic Bronze, Rubber Washers, Boxed	10
735SGPVCNBX	Brushed Nickel, Single Hole, Rubber Washers, Boxed	10
735SGPVCBX	Chrome Plated, Single Hole, Rubber Washers, Boxed	10
735SPVCCBBX	Classic Bronze, Single Hole, Rubber Washers, Boxed	10
735PVCBG	Tubular White Bathwaste Push & Seal CP, bagged	10
735PVCBX	boxed	10
735PVCBXX	with 2-1/4" screws, boxed	10
735SNPVCBG	Brushed Nickel, bagged	10
735SNPVCBX	boxed	10

735ABSBG	Tubular Black Bathwaste Push & Seal CP, bagged	10
735ABSBX	boxed	10
735GABSBX	with rubber washers	10

Tubular Bathwastes Shoe Outlet

Two hole CP face plates and CP zinc strainers are standard.



771PVCBG



772PVCBG

771PVCBG	Shoe Outlet White Bathwaste Lift & Turn CP, bagged	10
771PVCBX	boxed	10
771PVDBG	PVD Polished Brass, bagged	10
771PPVCBX	boxed	10
771SNPVCBX	Brushed Nickel, boxed	10
771WPVCBX	White Trim, boxed	10

772PVCBG	Shoe Outlet White Bathwaste Toe Touch CP, bagged	10
772PVCBX	boxed	10
772SNPVCBG	Brushed Nickel, bagged	10
772PPVCBG	PVD Polished Brass, bagged	10

Tubular Bathwastes Trip Lever

Overflow tube extends up to 14" and the shoe extends out to 8-1/4" on center lines. Longer tube units extend up to 21".
Add "H" for condensation head.

Item #	Description	Qty
750PVCBG	Trip Lever White 1-1/4" strainer CP, bagged	10
750PVCBX	boxed	10
750GPVCBX	with rubber washers	10
750MPVCBG	with Brass strainer, bagged	10
750MPVCBX	boxed	10
750HPVCBX	with condensation head, boxed	10

750ABSBG	Trip Lever Black CP 1-1/4" strainer, bagged	10
750ABSBX	boxed	10
750MABSBX	with Brass strainer, bagged	10
753ABSBX	Trip Lever Black 1-1/2" deep strainer CP, boxed	10

750+7PVCBG	Trip Lever PVC with Longer Tubes, CP 1-1/4" strainer, bagged	10
750+7PVCBX	boxed	5
75011PVCBX	with 1-1/2" strainer, boxed	5

750+7ABSBG	Trip Lever ABS with Longer Tubes, CP 1-1/4" strainer, bagged	10
750+7ABSBX	boxed	5



750PVCBG

Special finishes available, call for part numbers.

Sch 40 PVC & ABS Direct Drains

CP zinc strainer is standard.
Add "K" for shoe test kit.

TW2PVCBG	Sch 40 PVC Toe Touch CP, bagged	20
TW2PVCBX	boxed	20
TW2KABSBX	Sch 40 ABS Toe Touch CP with test kit, boxed	20

SW2PVCBG	Sch 40 PVC Push & Seal CP with test kit, bagged	20
SW2PVCBX	boxed	20
SW2ABSBG	Sch 40 ABS Push & Seal CP with test kit, bagged	20
SW2ABSBX	boxed	20
SW3PVCBX	Sch 40 PVC Push & Seal CP 1 hole, boxed	

SW4ABSBX	Sch 40 ABS Lift & Turn CP Brass with test kit, boxed	20
----------	--	----



TW2PVCBG

SW2PVCBG



702MOZR



726MR



703MOZ



737MR



753MZR



704M740R



704MS740R



754M740R

Strainer Cartridges

Item #	Description	Qty
702MOZR	Lift & Turn Cartridge CP with 3/8" stem	10
7028SN	Lift & Turn Cartridge BN with 3/8" stem	10
7028BB	Lift & Turn Cartridge BB with 3/8" stem	10
726MR	Toe Touch Cartridge CP with 5/16" stem	10
726MSR	Seal for Toe Touch Cartridge	10

Bath Strainers

703MZR	1-1/4" Lift & Turn CP with 3/8" stem	10
703MOZR	1-1/2" Lift & Turn CP with " stem	10
703MOR	1-1/2" Lift & Turn CP BR with 3/8" stem	5
7038BB	1-1/2" Lift & Turn BB with 3/8" stem	5

727MZR	Toe Touch Chrome with 5/16" stem	10
727SNK	Toe Touch Brushed Nickel with 3/8" stem	10
733R	Low Toe Touch Chrome with 3/8" stem	5
733SNR	Low Toe Touch Brushed Nickel with 3/8" stem	5

737MR	Push & Seal Strainer CP	10
-------	-------------------------	----

753MZR	1-1/4" Trip Lever Strainer CP Die Cast	10
753MR	with CP Brass Strainer	10
753X	1-1/2" Trip Lever Strainer CP	5

Face Plates and Screws

704M740R	Two Hole Chrome with 1-9/16" self tapping screws	10
704MSK	Single Hole Faceplate with Retainer Bar and Screws	5
704SN740R	Brushed Nickel	5
704CB740R	Classic Bronze	5
704OR740R	Oil Rubbed Bronze	5
704VB740R	Tuscan Bronze	5
754M740R	Chrome Trip Lever Face Plate with 1-9/16" screws	5

704MS740R	One Hole Chrome with 2-1/4" screw	10
704MPS740R	PVD Polished Brass	5
704SSN740R	Brushed Nickel	5
704SBB740	Brushed Bronze, Single Hole Faceplate w/ 2" Screw	5
704SFB740	Flat Black, Single Hole Faceplate w/ 2" Screw	5
704SCB740R	Classic Bronze	5
704SOR740R	Oil Rubbed Bronze	5

740MR	1-9/16" CP Face Plate Screw, self tapping	20
740M2	2-1/4" CP Face Plate Screw non-tapping	20

Bathwastes Brass

Item #	Description	Qty
TL750	Trip Lever CP 17 ga	10
TL850	Trip Lever CP 20 ga	10

LT710	Lift & Turn CP 17 ga	10
LT710SN	Lift & Turn Brushed Nickel 17 ga	10

LT710PS	Push & Seal CP 17 ga	10
1671A	1-3/8" CP Trim 20 ga CP tubes with rubber stopper	1
TT7725	17 Gauge Toe Touch	1



LT710



TL850



SLOT-LOCK BATHWASTE

EASY INSTALLATION: SAVES TIME AND MONEY

- Slot-Lock technology locks faceplate firmly in place
- Patented lock-in-place faceplate prevents loosening of overflow and retainer nut which could lead to serious overflow problems
- Thick foam washer for positive seal
- Unique overflow test cap prevents installation of faceplate without removal of testing device which could cause water damage
- Slot-Lock trim kits may be compatible with other brand rough-in kits in the marketplace
- Slot-Lock re-fit kits available for quick and easy trim outs in special finish
- Assembled in the USA with domestic and foreign components

LISTINGS & APPROVALS

All JB Solution products have been rigorously tested by industry professionals and approved or listed by the following



Half Kits



SLWH300CP

Push & Seal Half Kit - ABS

Item #	Description	Qty
SLBH300BNBX	Push & Seal Half Kit Brushed Nickel	10
SLBH300CBBX	Push & Seal Half Kit Classic Bronze	10
SLBH300ORBBX	Push & Seal Half Kit Oil Rubbed Bronze	10
SLBH300CP	Push & Seal Half Kit Chrome, bagged	10

Push & Seal Half Kit - PVC

Item #	Description	Qty
SLWH300BNBX	Push & Seal Half Kit Brushed Nickel	10
SLWH300CBBX	Push & Seal Half Kit Classic Bronze	10
SLWH300ORBBX	Push & Seal Half Kit Oil Rubbed Bronze	10
SLWH300CP	Push & Seal Half Kit Chrome, bagged	10

Toe Touch Half Kit - ABS

Item #	Description	Qty
SLBH200BNBX	Toe Touch Half Kit Brushed Nickel	10
SLBH200CBBX	Toe Touch Half Kit Classic Bronze	10
SLBH200ORBBX	Toe Touch Half Kit Oil Rubbed Bronze	10
SLBH200CP	Toe Touch Half Kit Chrome, bagged	10

Toe Touch Half Kit - PVC

Item #	Description	Qty
SLWH200BNBX	Toe Touch Half Kit Brushed Nickel	10
SLWH200CBBX	Toe Touch Half Kit Classic Bronze	10
SLWH200ORBBX	Toe Touch Half Kit Oil Rubbed Bronze	10
SLWH200CP	Toe Touch Half Kit Chrome, bagged	10



SLWH200CP

Lift & Turn Half Kit - ABS

Item #	Description	Qty
SLBH100BNBX	Lift & Turn Half Kit Brushed Nickel	10
SLBH100CBBX	Lift & Turn Half Kit Classic Bronze	10
SLBH100ORBBX	Lift & Turn Half Kit Oil Rubbed Bronze	10
SLBH100CP	Lift & Turn Half Kit Chrome, bagged	10
SLBH100BBBX	Lift & Turn Half Kit Brushed Bronze	10
SLBH100FBBX	Lift & Turn Half Kit Flat Black	

Lift & Turn Half Kit - PVC

Item #	Description	Qty
SLWH100BNBX	Lift & Turn Half Kit Brushed Nickel	10
SLWH100CBBX	Lift & Turn Half Kit Classic Bronze	10
SLWH100ORBBX	Lift & Turn Half Kit Oil Rubbed Bronze	10
SLWH100CP	Lift & Turn Half Kit Chrome, bagged	10
SLWH100BBBX	Lift & Turn Half Kit Brushed Bronze	10
SLWH100FBBX	Lift & Turn Half Kit Flat Black	



SLWH100CP

Full Kits

Push & Seal Full Kit - ABS

Item #	Description	Qty
SLBF300BNBX	Push & Seal Full Kit Brushed Nickel	10
SLBF300CBBX	Push & Seal Full Kit Classic Bronze	10
SLBF300ORBBX	Push & Seal Full Kit Oil Rubbed Bronze	10
SLBF300CP	Push & Seal Full Kit Chrome, bagged	10



SLWF300CP

Push & Seal Full Kit - PVC

Item #	Description	Qty
SLWF300BNBX	Push & Seal Full Kit Brushed Nickel	10
SLWF300CBBX	Push & Seal Full Kit Classic Bronze	10
SLWF300ORBBX	Push & Seal Full Kit Oil Rubbed Bronze	10
SLWF300CP	Push & Seal Full Kit Chrome, bagged	10

Toe Touch Full Kit - ABS

Item #	Description	Qty
SLBF200BNBX	Toe Touch Full Kit Brushed Nickel	10
SLBF200CBBX	Toe Touch Full Kit Classic Bronze	10
SLBF200ORBBX	Toe Touch Full Kit Oil Rubbed Bronze	10
SLBF200CP	Toe Touch Full Kit Chrome, bagged	10



SLWF200CP

Toe Touch Full Kit - PVC

Item #	Description	Qty
SLWF200BNBX	Toe Touch Full Kit Brushed Nickel	10
SLWF200CBBX	Toe Touch Full Kit Classic Bronze	10
SLWF200ORBBX	Toe Touch Full Kit Oil Rubbed Bronze	10
SLWF200CP	Toe Touch Full Kit Chrome, bagged	10

Lift & Turn Full Kit - ABS

Item #	Description	Qty
SLBF100BNBX	Lift & Turn Full Kit Brushed Nickel	10
SLBF100CBBX	Lift & Turn Full Kit Classic Bronze	10
SLBF100ORBBX	Lift & Turn Full Kit Oil Rubbed Bronze	10
SLBF100CP	Lift & Turn Full Kit Chrome, bagged	10
SLBF100BBBX	Lift & Turn Full Kit Brushed Bronze	10



SLWF100CP

Lift & Turn Full Kit - PVC

Item #	Description	Qty
SLWF100BNBX	Lift & Turn Full Kit Brushed Nickel	10
SLWF100CBBX	Lift & Turn Full Kit Classic Bronze	10
SLWF100ORBBX	Lift & Turn Full Kit Oil Rubbed Bronze	10
SLWF100CP	Lift & Turn Full Kit Chrome, bagged	10
SLWF100BBBX	Lift & Turn Full Kit Brushed Bronze	10

Trim Kit & Rough-ins

Half Kit Rough-in



SLWRK100

Item #	Description	Qty
SLWRK100	PVC Rough-in Half Kit	10
SLBRK100	ABS Rough-in Half Kit	10
SLCWRK100	PVC Rough-in Half Kit with Condensate Head	10
SLWRK100LT	PVC Less Test Kit	10

Lift & Turn Trim Kit



SL100CP

Item #	Description	Qty
SL100BN	Lift & Turn Trim Kit Brushed Nickel	20
SL100CB	Lift & Turn Trim Kit Classic Bronze	20
SL100OR	Lift & Turn Trim Kit Oil Rubbed Bronze	20
SL100BB	Lift & Turn Trim Kit Brushed Bronze	20
SL100FB	Lift & Turn Trim Kit Flat Black	20
SL100CP	Lift & Turn Trim Kit Chrome	20
SL101CP	Lift & Turn Trim Kit Chrome - cartridge & faceplate only	20

Toe Touch Trim Kit



SL200BN

Item #	Description	Qty
SL200BN	Toe Touch Trim Kit Brushed Nickel	20
SL200CB	Toe Touch Trim Kit Classic Bronze	20
SL200OR	Toe Touch Trim Kit Oil Rubbed Bronze	20
SL200CP	Toe Touch Trim Kit Chrome	20
SL201CP	Toe Touch Trim Kit Chrome - cartridge & faceplate only	20

Push & Seal Trim Kit



SL300BN

Item #	Description	Qty
SL300BN	Push & Seal Trim Kit Brushed Nickel	20
SL300CB	Push & Seal Trim Kit Classic Bronze	20
SL300OR	Push & Seal Trim Kit Oil Rubbed Bronze	20
SL300CP	Push & Seal Trim Kit Chrome	20
SL301CP	Push & Seal Trim Kit Chrome - cartridge & faceplate only	20

Re-Fit Trim Kits & Replacement Parts

Lift & Turn Re-Fit Trim Kit

Item #	Description	Qty
SL712BNBX	Re-Fit Brushed Nickel Trim Kit Lift & Turn 3/8"	12
SL712CBBX	Re-Fit Classic Bronze Trim Kit Lift & Turn 3/8"	12
SL712CPBX	Re-Fit Chrome Trim Kit Lift & Turn 3/8"	12
SL712ORBX	Re-Fit Oil Rubbed Bronze Trim Kit Lift & Turn 3/8"	12
SL712PNBX	Re-Fit Pearl Nickel Trim Kit Lift & Turn 3/8"	12
SL712BBBX	Re-Fit Brushed Bronze Trim Kit Lift & Turn 3/8"	12
SL712FBBX	Re-Fit Flat Black Trim Kit Lift & Turn 3/8"	12



SL712CPBX

Push & Seal Re-Fit Trim Kit

Item #	Description	Qty
SL737BNBX	Re-Fit Brushed Nickel Push & Seal	6
SL737CBBX	Re-Fit Classic Bronze Push & Seal	6



SL737BNBX

Face Plates & Spare Parts

Item #	Description	Qty
725X	Face Plate only - Chrome	1
725XBN	Face Plate only - Brushed Nickel	1
725XCB	Face Plate only - Classic Bronze	1
725XOR	Face Plate only - Oil Rubbed Bronze	1
725XBB	Face Plate only - Brushed Bronze	1
725XPN	Face Plate only - Polished Nickel	1
725XFB	Face Plate only - Flat Black	1
725XWH	Face Plate only - White	1
215X	Retainer Nut	1



725X



BRASS TUBULAR

P-Traps

Item #	Description	Qty
101	1-1/4" 17 ga CP P-Trap	10
101B	with brass nuts	10
101D	with box flange	10
101BD	with box flange and brass nuts	10
10115	with 15" wall bend	10
101B15	with 15" wall bend and brass nuts	10
101D15	with 15" wall bend and box flange	10

100	1-1/4" 20 ga CP P-Trap	25
100B	with brass nuts	25
100D	with box flange	25
100BD	with box flange and brass nuts	25
100BF	with brass nuts and bell flange	25
10015	with 15" wall bend	10
10015B	with 15" wall bend and brass nuts	10

100X	1-1/4" 22 ga CP P-Trap	25
100XD	with box flange	25



101BD

105	1-1/2" 17 ga CP P-Trap	10
105B	with brass nuts	10
105D	with box flange	10
105BD	with brass nuts and box flange	10
10512	with 12" wall bend	10
10515	with 15" wall bend	10
105D15	with 15" wall bend and box flange	10
10515DB	with 15" wall bend, box flange and brass nuts	10

104	1-1/2" 20 ga CP P-Trap	25
104B	with brass nuts	25
104D	with box flange	25
104BD	with brass nuts and box flange	25
104R	with Bayonet bushing	10
10415	with 15" wall bend	10
10415B	with 15" wall bend and brass nuts	10
10415D	with 15" wall bend and box flange	10



104

104X	1-1/2" 22 ga CP P-Trap	25
104XD	with box flange	25
104XR	with Bayonet bushing	10
104X15	with 15" wall bend	10

P-Traps with Cleanouts



104CO

Item #	Description	Qty
101CO	1-1/4" 17 ga CP P-Trap with Cleanout	10
101COB	with brass nuts	10
101COD	with box flange	10
101COBD	with brass nuts and box flange	10
101CO15	with 15" wall bend	10

100CO	1-1/4" 20 ga CP P-Trap with Cleanout	25
100COB	with brass nuts	25

105CO	1-1/2" 17 ga CP P-Trap with Cleanout	10
105COB	with brass nuts	10
105COD	with box flange	10
105COBD	with brass nuts and box flange	10
105CO12	with 12" wall bend	10
105CO15	with 15" wall bend	10

104CO	1-1/2" 20 ga CP P-Trap with Cleanout	25
104COB	with brass nuts	25
104COBD	with brass nuts and box flange	25
104CO15	with 15" wall bend	10



105GJ

P-Traps Ground Joint

Chrome plated finish. Standard traps have a low flange. For a Bayonet reducer bushing, add "R" to part number.

105GJ	1-1/2" 17 ga CP P-Trap Ground Joint with brass nuts and low flange	10
105GJD	with box flange	10

J-Bends 1-1/4"



131

130X	1-1/4" 22 ga CP J-Bend	25
130	1-1/4" 20 ga CP J-Bend	25

132	1-1/4" 17 ga CP J-Bend	25
132B	with brass nuts	25
132CO	with Cleanout	25

J-Bends 1-1/2"

131X	1-1/2" 22 ga CP J-Bend	25
131	1-1/2" 20 ga CP J-Bend	25
131B	with brass nuts	25

133	1-1/2" 17 ga CP J-Bend	25
133B	with brass nuts	25
133CO	with Cleanout	25
133COB	with Cleanout and brass nuts	25

Wall Bends 1-1/4"



163

161X	1-1/4" x 8" 22 ga Wall Bend	25
165X	1-1/4" x 12"	25
161	1-1/4" x 8" 20 ga Wall Bend	25
165F	1-1/4" x 15"	25
162	1-1/4" x 8" 17 ga Wall Bend	25
165	1-1/4" x 20" 20 ga Wall Bend	
166	1-1/4" x 15"	25

Wall Bends 1-1/2"

163X	1-1/2" x 8" 22 ga Wall Bend	25
167X	1-1/2" x 12"	25
163	1-1/2" x 8" 20 ga Wall Bend	25
167F	1-1/2" x 15"	25
164	1-1/2" x 8" 17 ga Wall Bend	25
168	1-1/2" x 12"	25
168F	1-1/2" x 15"	25

Sink Traps

Item #	Description	Qty
502X	1-1/2" Sink Trap with 1-1/2" fip cast elbow and 22 ga J-bend	25
502	with 20 ga J-bend	25
503	with 17 ga J-bend and brass nuts	10
503GJ	1-1/2" Sink Trap with 1-1/2" fip Ground Joint cast elbow and 17 ga J-bend	10

134	1-1/4" 20 ga CP Sink Trap J-Bend with captured nut	25
-----	--	----

135X	1-1/2" 22 ga CP Sink Trap J-Bend with captured nut	25
135	1-1/2" 20 ga CP Sink Trap J-Bend with captured nut	25
136	1-1/2" 17 ga CP Sink Trap J-Bend with captured brass nut	25
135GJ	1-1/2" 20 ga CP Sink Trap J-Bend with Ground Joint	10
136GJ	1-1/2" 17 ga CP Sink Trap J-Bend with Ground Joint	10



502

Repair P-Traps

All have swivel elbow. Available with brass nuts as noted below.

108	1-1/4" 20 ga CP Repair P-Trap	25
108B	with brass nuts	25
7108	1-1/4" 17 ga CP Repair P-Trap with brass nut on swivel connection	25

109	1-1/2" 20 ga CP Repair P-Trap	25
-----	-------------------------------	----



109

Brass Slip Nuts and Washers

Slip nuts do not include washers.

364	1-1/4" x 1-1/4" CP Brass Slip Nut	100
365	1-1/2" x 1-1/2"	100
366	1-1/2" x 1-1/4"	100



365

793	1-1/4" Molded Rubber Slip Joint Washer	100
795	1-1/2"	100

Die Cast Slip Nuts

Slip nuts do not include washers.

370	1-1/4" x 1-1/4" CP Die Cast Slip Nut	100
372	1-1/2" x 1-1/2"	100
373	1-1/2" x 1-1/4"	100
374	1-1/2" x 1 3/8"	100



372

Rubber Slip Joint Washers

Square cut washers, standard washers are 1/8" hgh. Slip nut washers are 3/16" high.

1061A	1-1/4" Slip Joint Washer 1/8" height	100
1061B	1-1/2"	100



1061A

Rubber Tailpiece Washer

Cloth inserted rubber.

1064	1-1/2" Rubber Cloth Inserted Tailpiece Washer	100
------	---	-----



1064

Rubber Reducing Washer

1-1/2" od x 1-1/4" od

317BT	Bayonet Reducing Washer	25
-------	-------------------------	----



317BT

Disposal Washer

1094I	Disposal Washer, Insinkerator	25
-------	-------------------------------	----



1094I

S-Traps 1-1/4"



116

Item #	Description	Qty
117	1-1/4" 17 ga CP S-Trap	10
117B	with brass nuts	10
117D	with box flange	10
117BD	with brass nuts, box flange	10
116	1-1/4" 20 ga CP S-Trap	10
116B	with brass nuts	10
116D	with box flange	10
116BD	with brass nuts, box flange	10
116X	1-1/4" 22 ga CP S-Trap	10

S-Traps 1-1/2"



120

Item #	Description	Qty
121	1-1/2" 17 ga CP S-Trap	10
121B	with brass nuts	10
121BD	with brass nuts, box flange	10
120	1-1/2" 20 ga CP S-Trap	10
120B	with brass nuts	10
120D	with box flange	10
120BD	with brass nuts, box flange	10
120X	1-1/2" 22 ga CP S-Trap	10

Center Outlet Wastes

Includes cast brass baffle tee. DC for direct connect and SJ for slip joint connections.

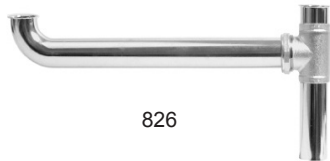


823

820	Center Outlet Waste 16" DC CP 22 ga	10
2820	Center Outlet Waste 16" DC CP 20 ga	10
7820	Center Outlet Waste 16" DC CP 17 ga	10
7820N	with brass nuts	10
821	Center Outlet Waste 21" DC CP 22 ga	15
823	Center Outlet Waste 16" SJ CP 22 ga	10
2823	Center Outlet Waste 16" SJ CP 20 ga	10
824	Center Outlet Waste 21" SJ CP 22 ga	15
2824	Center Outlet Waste 21" SJ CP 20 ga	15
2824BN	with brass nuts	15

End Outlet Wastes

Includes cast brass baffle tee. DC for direct connect and SJ for slip joint connections.



826

826	End Outlet Waste 16" DC CP 22 ga	10
2826	End Outlet Waste 16" DC CP 20 ga	10
7826	End Outlet Waste 16" DC CP 17 ga	10
7826N	with brass nuts	10
827	End Outlet Waste 21" DC CP 22 ga	10
829	End Outlet Waste 16" SJ CP 22 ga	10
2829	End Outlet Waste 16" SJ CP 20 ga	10
7829	End Outlet Waste 16" SJ CP 17 ga	10
7829N	with brass nuts	10
2830	End Outlet Waste 21" SJ CP 20 ga	10
2830BN	with brass nuts	10

Disposer Wastes

Includes cast brass baffle tee.



835

835	13" Disposer Waste 20 ga	15
837	13" Disposer Waste 17 ga	15

Waste Arms Slip Joint

Item #	Description	Qty
823B	Waste Arm Slip Joint 1-1/2" x 7" 22 ga	25
825B	1-1/2" x 11-1/2"	25
829B	1-1/2" x 15"	25
830B	1-1/2" x 19-1/2"	25
2820B	Waste Arm Slip Joint 1-1/2" x 7" 20 ga	25
7826B	Waste Arm Slip Joint 1-1/2" x 15" 17 ga	25
2823B	Waste Arm Slip Joint 1-1/2" x 7" 20 ga	25
2824B	1-1/2" x 9"	25
2829B	1-1/2" x 15"	25
2830B	1-1/2" x 19-1/2"	25
7829B	Waste Arm Slip Joint 1-1/2" x 15" 17 ga	25



823B

Waste Arms Direct Connect

Item #	Description	Qty
820B	Waste Arm Direct Connect 1-1/2" x 7" 22 ga	25
821B	1-1/2" x 9-1/2"	25
822B	1-1/2" x 11-1/2"	25
826B	Waste Arm Direct Connect 1-1/2" x 15" 22 ga	25
827B	1-1/2" x 19-1/2"	25
2820B	Waste Arm Direct Connect 1-1/2" x 7" 20 ga	25
7826B	Waste Arm Direct Connect 1-1/2" x 15" 17 ga	25



820B

Reducing Tailpieces

420	Reducing Tailpiece 1-1/2" x 1-1/4" x 6" 22 ga	25
421	1-1/2" x 1-1/4" x 8"	25
423	1-1/2" x 1-1/4" x 12"	25
7421	1-1/2" x 1-1/4" x 8" 17 ga	25



420

Flanged Tailpieces

424	22 ga 1-1/2" x 6"	25
425	Flanged Tailpiece 22 ga 1-1/2" x 6"	25
426	1-1/2" x 8"	25
428	1-1/2" x 12"	25

2425	Flanged Tailpiece 20 ga 1-1/2" x 6"	25
2426	1-1/2" x 8"	25
2428	1-1/2" x 12"	25

7425	Flanged Tailpiece 17ga 1-1/2" x 6"	25
7426	1-1/2" x 8"	25



425

Double Flanged Tailpieces

429	Double Flanged Tailpiece 1-1/2" x 16" 22 ga	25
2429	1-1/2" x 16" 20 ga	25



429

T.O.E. Tailpieces

849	T.O.E. Hi-line Nipple 1-1/2" x 1" 20 ga	10
910	T.O.E. Reducing Tailpiece 1-1/2" x 1-1/4" x 6" 20 ga	25



849



910

Threaded Brass Tubes

Chrome plated. T.B.E. for threaded both ends and T.O.E. for threaded one end.

813	1-1/4" x 12"	25
7811	T.B.E. Tubes 17ga 1-1/4" x 8"	25
7813	1-1/4" x 12"	25

814	T.B.E. Tubes 20 ga 1-1/2" x 6"	
817	1-1/2" x 12"	25
7817	1-1/2" x 12" - 17 gauge	25



813

Slip Extensions 1-1/4"

Item #	Description	Qty
4426	Slip Extension 1-1/4" x 6" 22 ga	25
4428	1-1/4" x 8"	25
44212	1-1/4" x 12"	25
24426	1-1/4" x 6" 20 ga	25
24428	1-1/4" x 8"	25
24428B	with brass nut	25
244212	1-1/4" x 12"	25



4426

74426	Slip Extension 1-1/4" x 6" 17 ga	25
74426B	with brass nut	25
74428	1-1/4" x 8"	25
74428B	with brass nut	25
744212	1-1/4" x 12"	25
744212B	with brass nut	25



4446

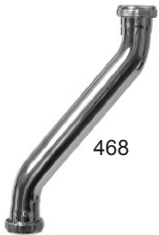
Slip Extensions 1-1/2"

Item #	Description	Qty
4446	Slip Extension 1-1/2" x 6" 22 ga	25
4448	1-1/2" x 8"	25
44412	1-1/2" x 12"	25
24446	1-1/2" x 6" 20 ga	25
24448	1-1/2" x 8"	25
244412	1-1/2" x 12"	25

74446	Slip Extension 1-1/2" x 6" 17 ga	25
74448	1-1/2" x 8"	25
744412	1-1/2" x 12"	25
744412B	with brass nuts	25

Double Offsets

467	1-1/4" Double Offset 22 ga CP	25
468	1-1/2" Double Offset 22 ga CP	25



468

Double Slip Extensions

44216D	Double Slip Extension 1-1/4" x 16" 22 ga	25
244216D	1-1/4" x 16" 20 ga	25
244216DB	with brass nuts	25

44416D	Double Slip Extension 1-1/2" x 16" 22 ga	25
244416D	1-1/2" x 16" 20 ga	25
244416DB	with brass nuts	25



44416D

PO Plugs

Chrome plated 22 ga. PO plugs have over-flow holes and CO plugs do not.

1042A	PO Plug CP, Two Piece 1-1/4" x 5"	25
1042B	1-1/4" x 8"	25
1042D	1-1/4" x 12"	25

1042E	PO Plug CP, One Piece 1-1/4" x 5"	25
1042F	1-1/4" x 8"	25
1042G	1-1/4" x 12"	25
1042I	CO Plug CP, One Piece 1-1/4" x 5"	25



1042A

1042E



829T

Outlet Tees Brass

End outlet and center outlet tees are cast brass and have a baffle.

829T	End Outlet Tee, Slip Joint with tailpiece	10
829TB	End Outlet Tee, Slip Joint with tailpiece and brass nuts	10
826T	End Outlet Tee, Direct Con- nect and tailpiece	10

820T	Center Outlet Tee, Slip Joint with tailpiece	10
820TB	Center Outlet Tee, Slip Joint with tailpiece and brass nuts	10

840T	Three Way Slip Joint Repair Tee	10
840TB	Three Way Slip Joint Repair Tee with brass nuts	10



820T



1042I

Slip Joint Connectors

Item#	Description	Qty
448	1-1/4" Slip Coupling CP	25
449	1-1/2"	25



449

450	1-1/4" Slip Elbow CP 90°	25
451	1-1/2"	25



451

452	1-1/4" Slip Elbow CP 45°	25
453	1-1/2"	25



453

Branch Tailpieces - 20 Gauge

924	Direct Connect Tailpiece 1-1/2" x 6" with 5/8 od Branch	25
925	1-1/2" x 8" with 5/8 od Branch	25
916	1-1/2" x 6" with 7/8 od Branch	25
917	1-1/2" x 8" with 7/8 od Branch	25



917

929	Slip Joint Tailpiece 1-1/2" x 8" with 5/8 od Branch	25
921	1-1/2" x 8" with 7/8 od Branch	25



921

927	T.O.E. Tailpiece 1-1/2" x 8" with 5/8 od Branch	25
919	1-1/2" x 8" with 7/8 od Branch	25
914	1-1/4" x 6" with 7/8 od Branch	25



919

Trap Primer Tailpieces

1038TP	1-1/4" Trap Primer CP Fine Thread top 8"	10
1038TPC	1-1/2" Trap Primer CP Direct Connect 8"	10



1038TP 1038TPC



Commercial



140CO

Semi-cast Traps

CP cast brass J-bend, 17 ga arm, brass nuts and box flange.

Item #	Description	Qty
150CO	1-1/4" Semi-Cast P-Trap with Cleanout	10

140CO	1-1/2" Semi-Cast P-Trap with Cleanout	10
-------	---------------------------------------	----



523800

L. A. Code Trap

Ground joint connection.

523800	L.A. Code Trap CP with cast elbow	25
RB523800	L.A. Code Trap CP with cast elbow, rough brass	25

Boston Code P-Trap

Ground joint connection.

455M	Boston Code Trap, CP, Solder	25
------	------------------------------	----



1042L

1042K

1042H

Commercial Lav Drains

19 hole pattern chrome plated brass grid, 17 ga tubes.

1042L	19 Hole Lav Grid Drain CP with a 6" 17 ga Tailpiece	50
1042L12	with a 12" 17 ga Tailpiece	25
1042LBS	Brushed SS with a 6" 17 ga Tailpiece	12
1042K	9 Hole Lav Grid Drain with 3/8" center hole CP with a 6" 17 ga Tailpiece (center hole for cleaning out trap)	12
1042H	19 Hole Handicap Lav Grid Drain CP four piece unit	25

P-Trap & Supply Line Covers

Complies with specifications of ADA mandate.

JB502	P-Trap Cover and 2 Supply Covers	15
JB503	P-Trap Cover, 2 Supply and Offset Cover	15
JB505	Offset Cover Only	15



JB502



JB505

Grab Bars Satin Finish

Concealed flanges, meets ANSI 117.1 and all ADA requirements. Heavy duty stainless steel. Individually bagged with screws.

Item #	Description	Qty
12512CS	1-1/4" x 12" Grab Bars Satin Finish	10
12518CS	1-1/4" x 18"	10
12524CS	1-1/4" x 24"	10
12536CS	1-1/4" x 36"	10

15012CS	1-1/2" x 12" Grab Bars Satin Finish	10
15018CS	1-1/2" x 18"	10
15024CS	1-1/2" x 24"	10
15030CS	1-1/2" x 30"	10
15032CS	1-1/2" x 32"	10
15036CS	1-1/2" x 36"	10
15042CS	1-1/2" x 42"	5
15048CS	1-1/2" x 48"	5



15024CS

Grab Bars Peened Finish

Concealed flanges, meets ANSI 117.1 and all ADA requirements. Heavy duty stainless steel. Individually bagged with screws.

12518CP	1-1/4" x 18" Grab Bars Peened Finish	10
---------	--------------------------------------	----

15018CP	1-1/2" x 18" Grab Bars Peened Finish	10
15024CP	1-1/2" x 24"	10
15036CP	1-1/2" x 36"	10
15042CP	1-1/2" x 42"	5
15048CP	1-1/2" x 48"	5



15024CP

Commercial Cast Brass Strainers

Commercial grade cast brass strainer. Drop post brass stopper has O-ring seal. Mounting washer is 1/4" thick and a brass slip nut is standard.

Compare to: Watts - 2-8-3H, Dearborn - 816, CS&B - 3725BPC.

JB300	Commercial Grade Cast Brass Strainer CP	24
-------	---	----



JB300

Other Popular Commercial Strainers

Full line of strainers are found in the strainer section of this catalog.

JB250	CP Deluxe Strainer, Stick Post Basket	24
-------	---------------------------------------	----

1132	SS Flat Top Strainer 4-1/2"	24
------	-----------------------------	----

1134H	CP Deep Duplex Bar Sink Strainer with re-moveable basket	25
-------	--	----

1525	Heavy Plain Brass Bar Sink Plug	6
------	---------------------------------	---



JB250



1525



1132



1134H



KITCHEN & BAR STRAINERS

JB250 Deluxe Strainers

Heavy gauge chrome plated strainer with a stick post basket and a rubber stopper. Mounting washer is 1/4" thick. The JB250SS is all stainless steel. Compare to: Dearborn Lucky 7, CS&B CSB250, Garvin 2200, Keeney 2431NPC.

Item #	Description	Qty
JB250	CP Deluxe Strainer, Stick Post Basket	24
JB250BL	with brass nuts	25
JB250424	with 4" tailpiece	10
JB250BL424	with brass nuts and 4" tailpiece	10

JB250SN	Brushed Nickel Strainer	25
JB250PVD	PVD Polished Brass	25
JB250SS	Stainless Steel	24

BJB250	Replacement Basket for JB250 and JB250SS	10
BJB250S	for JB250SN	10
340Z	Large Die Cast Locknut	10
368	Large Brass Locknut	10
327RW	Large 1/4" Rubber Mounting Washer	10
330FW	Large Friction Washer	10



JB250

Deep Locking Cup Strainers with Spring Post

Deep locking cup stainless steel body with a spring post basket and a triple seal stopper. Mounting washer is 1/4" thick. The 1133ES model is identical to the E model but with a shorter shank.

Compare to: Dearborn #14, Watts Kwik-fit 644003.

1133E	Deep Locking Cup SS Strainer, Spring Post Basket	24
1133EB	with brass nuts	25
1133E424	with 4" tailpiece	10

B1133E	Replacement Basket for 1133E	10
1270B	1-1/2" Die Cast Locknut for 1133E series	12



1133E

Deep Locking Cup Strainers with Stick Post

Deep locking cup stainless steel body with a stick post basket and a rubber stopper. Mounting washer is 1/4" thick. The 1133DS strainer is identical to the D model but with a shorter shank.

Compare to: Dearborn #18, Keeney 1432SS

1133D	Deep Locking Cup SS Strainer, Stick Post Basket	24
1133DB	with brass nuts	25
1133DB424	with 4" tailpiece	10
B1133D	Replacement Basket for 1133D	10

1133DS	Deep Locking Cup SS Strainer, Stick Post Basket and Short Shank	25
--------	---	----



1133D



1133DS

Economy Stick Post Strainers

All stainless steel with a stick post basket and rubber stopper.
Compare to: Dearborn - 11, Watts -2-9-3



1133

Item #	Description	Qty
1133	Economy SS Strainer, Stick Post Basket	50
1133BL	with brass nuts	25
1133424	with 4" tailpiece	10
1133HW	with 1/4" mounting washer	25

B1133	Replacement Basket for 1133	10
325RW	1/8" Mounting Washer for 1133 strainer	10

Spin & Lock Strainers

All stainless steel strainer with a screw-in basket and ground joint stopper.
Compare to: Dearborn - 17, Watts - 653003, Keeney - 1433SS.



1133L

1133L	Spin & Lock SS Strainer	24
1133LBL	with brass nuts	25
1133L424	with 4" tailpiece	10

B1133L	Replacement Basket for 1133L	10
--------	------------------------------	----

4 Prong Strainers

Chrome plated brass body with a four finger post basket. Easy turn-n-drop basket action with a rubber stopper.

Compare to: CS&B - CSB461, Garvin - 2230, Dearborn - L74.



JB461

JB461	CP Strainer with 4 Prong Basket	25
JB461BL	with brass lock and slip nut	25

BJB461	Replacement Basket for JB461	10
JB461SN	Brushed Nickel Strainer with 4 Prong Basket	25

Super Seal Ball Bearing Post Strainers

Deep locking cup stainless steel body with a ball-bearing post basket and a triple seal stopper. Mounting washer is 1/4" thick.

Compare to: Dearborn - 15, Keeney - 1434SS, CS&B - 768SS.



JB430

JB430	Super Seal SS Strainer with ball bearing post	25
JB430B	with brass nuts	25
JB430424	with 4" tailpiece	25

BJB430	Replacement Basket for JB430	10
369	1-1/2" Brass locknut	12

Quick Mount Thumb Screw Strainer

A patented 1/4 turn quick mounting system, and screw plate that doesn't need to be threaded onto the shank. Complete mounting the strainer to the sink with three thumb screws. Stainless steel body with a spring post basket and a triple seal stopper. Mounting washer is 1/4" thick and a brass slip nut is standard.



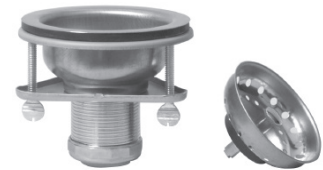
JB400

JB400	Quick Mount SS Thumb Screw Strainer	25
-------	-------------------------------------	----

Easy Mount Thumb Screw Strainer

Thumb screw mount SS strainer with spring post basket and triple seal stopper. Mounting washer is 1/4" thick and a brass slip nut is standard.

Item No.	Description	Qty
1133EZDB	Easy Mount Spring Post SS Thumb Screw Strainer	24



1133EZDB

1133LEZ	Easy Mount Spin & Lock SS Thumb Screw Strainer	24
1133LEZB	Easy Mount Spin & Lock SS Thumb Screw Strainer with brass nut	24

Commercial Cast Brass Strainers

Commercial grade cast brass strainer. The drop post brass stopper has an O-ring seal. Mounting washer is 1/4" thick and a brass slip nut is standard. Compare to: Watts - 2-8-3H, Dearborn - 816, CS&B - 3725BPC.

JB300	Commercial Grade Cast Brass Strainer, CP	24
JB300ORB	Commercial Grade Cast Brass Strainer, Oil Rubbed Bronze	24



JB300

Flat Top SS Strainer

For commercial kitchen wash sinks. Removable stainless steel grid and no stopper.

1132	SS Flat Top Strainer 4-1/2"	24
------	-----------------------------	----



1132

Bar Plug Strainer

Heavy Duty Machined brass bar Plug with a solid brass stopper and a 1" ips tailpiece.

1525	Heavy Plain Brass Bar Plug	6
------	----------------------------	---



1525

Bar Sink Strainers

Ideal for bar sinks and laundry tubs with 2-1/2" opening.

1134	SS Duplex Sink Strainer with flat grid	80
1134E	SS Junior Duo Sink Strainer with junior basket	25



1134

1134H	CP Deep Duplex Bar Sink Strainer with deep basket	25
-------	---	----



1134E



1134H



Universal Strainer Baskets

1142	Replacement Basket SS Drop Post	12
1142B	Replacement Basket SS Stick Post	12



1142



1142B

Stainless Steel Strainer

1135	Stainless Steel, 1 piece, double cup, SS basket with CP ABS Post	24
------	--	----



1135



JB SIGNATURE

Kitchen Strainers Metal

JB Signature two piece strainer has a plastic base and metal trim. JB Signature metal finishes match most manufacturers finishes; see the cross reference chart below. An extension bolt for sinks up to 2-3/4" thick is listed at the bottom of this category. Packaged in clam shells and boxes.

Item #	Description (Clammed)
JBC107	Polished SS (Clam Shell)
JBC108	PVD Polished Brass
JBC110	Brushed SS
JBC111	Brushed Nickel
JBC113	Tuscan Bronze
JBC401	Aged Bronze
JBC403	Classic Bronze
G106000	Strainer Extension Bolt 4" long

Item #	Description (Boxed)
JBX107	Polished SS
JBX108	PVD Polished Brass
JBX110	Brushed SS
JBX111	Brushed Nickel
JBX113	Tuscan Bronze
JBX401	Aged Bronze
JBX403	Classic Bronze



JBX110



G106000

JB Metal Finish Cross Reference Chart

JB Signature Classic Bronze	-	Moen's Oil Rubbed Bronze
JB Signature Classic Bronze	-	Delta's Venetian Bronze
JB Signature Classic Bronze	-	Kohler's Oil Rubbed Bronze
JB Signature Classic Bronze	-	Luxart Oil Rubbed Bronze
JB Signature Oil Rubbed Bronze	-	Grohe's Oil Rubbed Bronze
JB Signature Oil Rubbed Bronze	-	Luxart Cafe

Kitchen Strainers Matte

JB Signature matte finishes match most composite sink finishes; see cross reference chart below. These two piece strainers are molded from POM plastic and are resistant to chipping, scratching and peeling like painted metal strainers. Fits 3-1/2" openings. Oil Rubbed Bronze is a matte finish, no M is needed in part number. Packaged in clam shells and boxes.

Item #	Description (Clammed)
JBC100M	Slate Gray
JBC101M	Matte White
JBC102M	Matte Black
JBC103M	Matte Biscuit
JBC106M	Matte Sandstone
JBC107M	Matte Water Stone
JBC109M	Matte Gray Ash
JBC112	Matte Oil Rubbed Bronze

Item #	Description (Boxed)
JBX100M	Slate Gray
JBX101M	Matte White
JBX102M	Matte Black
JBX103M	Matte Biscuit
JBX106M	Matte Sandstone
JBX107M	Matte Water Stone
JBX109M	Matte Grey Ash
JBX112	Matte Oil Rubbed Bronze



JBC112

JB Composite Sink Finish Cross Reference Chart

JB Signature	Elkay	Blanco	Swanstone	Moen
Matte White	White	White	Bianca	White
Matte Black	Black	Anthracite	Nero	Black
Oil Rubbed Bronze	Mocha	Café Brown	Espresso	
Sandstone		Biscotti		
Water Stone		Truffle		
Gray Ash		Cinder		



JBC101M

Kitchen Strainers

These two piece strainers are molded from POM plastic and are resistant to chipping and scratching. Packaged in clam shells and boxes.



JBX101

Item #	Description Clammed	Item #	Description Boxed
JBC101	White (Clam Shell)	JBX101	White (Boxed)
JBC102	Black	JBX102	Black
JBC103	Biscuit	JBX103	Biscuit



JBX

Kitchen Strainers Economy

One piece strainer mounts with a large locknut. Manufactured from POM plastic. Packaged in clam shells and boxes.

JBC115	Black	JBX115	Black
JBC116	Biscuit	JBX116	Biscuit

InSinkErator® Disposal Flanges Metal

Fits InSinkErator and similar brands. Replaces factory flange on disposal.

Packaged in clam shells and boxes.



JBX125

JBC125	Polished SS (Clam Shell)	JBX125	Polished SS (Boxed)
JBC128	Brushed SS	JBX128	Brushed SS
JBC129	Brushed Nickel	JBX129	Brushed Nickel
JBC131	Tuscan Bronze	JBX131	Tuscan Bronze
JBC428	Classic Bronze	JBX428	Classic Bronze

InSinkErator® Disposal Trims Matte

JB Signature matte finishes match most composite sink finishes; see composite sink finish cross reference chart. Molded from POM plastic, they are resistant to chipping and scratching like painted metal disposal flanges. Simply snap these patented trims into your existing disposal flange. Oil Rubbed Bronze is a matte finish so no M is needed in the part number. Packaged in clam shells and boxes.



JBX119M

JBC119M	Matte White (Clam Shell)	JBX119M	Matte White (Boxed)
JBC120M	Matte Black	JBX120M	Matte Black
JBC121M	Matte Biscuit	JBX121M	Matte Biscuit
JBC124M	Matte Sandstone	JBX124M	Matte Sandstone
JBC125M	Matte Water Stone	JBX125M	Matte Water Stone
JBC127M	Matte Gray Ash	JBX127M	Matte Gray Ash
JBC130	Oil Rubbed Bronze	JBX130	Oil Rubbed Bronze
JBC137M	Slate Gray	JBX137M	Slate Gray

InSinkErator® Disposal Trims

Fits InSinkErator and similar brands. Molded from POM plastic, they are resistant to chipping and scratching. Simply snap these patented trims into the existing disposal flange. Packaged in clam shells and boxes.

JBC119	White (Clam Shell)	JBX119	White (Boxed)
JBC120	Black	JBX120	Black
JBC121	Biscuit	JBX121	Biscuit

InSinkErator® Evolution Disposal Trims Matte

JB Signature Matte finishes match most composite sink finishes, see JB composite sink finish cross reference chart. Molded from POM plastic, they are resistant to chipping, peeling and scratching like painted metal disposal flanges. Simply snap these patented trims into your existing disposal flange. Oil Rubbed Bronze is a matte finish so no M is needed in the part number. Packaged in clam shells and boxes.

Item #	Description Clammed
JBC119EM	White (Clam Shell)
JBC120EM	Black
JBC121EM	Biscuit
JBC124EM	Sandstone
JBC125EM	Water Stone
JBC130E	Oil Rubbed Bronze
1072S	Evolution Splash Guard

Item #	Description Boxed
JBX119EM	White (Boxed)
JBX120EM	Black
JBX121EM	Biscuit
JBX124EM	Sandstone
JBX125EM	Water Stone
JBX130E	Oil Rubbed Bronze



JBX120EM

InSinkErator® Evolution Disposal Trims

Remove factory splash guard and snap this patented trim and splash guard into your existing Evolution disposal flange. Splash guard is included to replace factory splash guard. Packaged in clam shells and boxes.

JBC119E	White (Clam Shell)
JBC120E	Black
JBC121E	Biscuit
JBC130E	Oil Rubbed Bronze
1072S	Evolution Splash Guard

JBX119E	White (Boxed)
JBX120E	Black
JBX121E	Biscuit
JBX130E	Oil Rubbed Bronze



JBX120E

Disposal Replacement Baskets

InSinkErator®

For a matte finish basket, add an M to end of part number.

Item #	Description
JBX150	White
JBX151	Black
JBX152	Biscuit
JBX161	Oil Rubbed Bronze



JBX161

JBX156	Polished SS
JBX159	Brushed SS
JBX160	Brushed Nickel
JBX162	Tuscan Bronze

Strainer Replacement Baskets

For a matte finish basket, add an M to end of part number. All baskets are boxed.

Item #	Description
JBX137	White
JBX138	Black
JBX139	Biscuit
JBX140	Almond
JBX148	Oil Rubbed Bronze



JBX138

JBX143	Polished SS
JBX144	PVD Polished Brass
JBX146	Brushed Stainless Steel
JBX147	Brushed Nickel
JBX149	Tuscan Bronze
JB151X	Classic Bronze



JBX146

Sink Hole Covers

2" diameter. Includes putty cup.

JBX211	Chrome
JBX212	Brushed SS
JBX214	Brushed Nickel
JBX215	Oil Rubbed Bronze
JBX216	Tuscan Bronze

JBX290	Matte Black
JBX206	White
JBX207	Black
JBX208	Biscuit
JBX209	Almond



JBX214

JB Composite Sink Finish Cross Reference Chart

JB Signature	Elkay	Blanco	Swanstone	Moen
Matte White	White	White	Bianca	White
Matte Black	Black	Anthracite	Nero	Black
Oil Rubbed Bronze	Mocha	Café Brown	Espresso	
Sandstone		Biscotti		
Water Stone		Truffle		
Gray Ash		Cinder		

Air Gap Caps

JB Signature air gap caps feature a flanged base which fully covers the air gap nut and washer.



JBX203



JBX195M

Item #	Description
JBX200	Chrome (plastic)
JBX203	Brushed Nickel
JBX201	Brushed SS
JBX204	Oil Rubbed Bronze
JBX192	Classic Bronze
JBX205	Tuscan Bronze

JBX195	White
JBX196	Black
JBX196FB	Flat Black
JBX197	Biscuit
JB8130	Air Gap Body only

Air Gap Kits

Kit includes an air gap body and cap bagged together.



JBB203

Item #	Description
JBB200	Air Gap Kit with Chrome Cap
JBB203	Brushed Nickel
JBB201	Brushed SS
JBB204	Oil Rubbed Bronze
JBB208	Classic Bronze
JBB205	Tuscan Bronze

JBB195	White
JBB196	Black
JBB196M	Matte Black
JBB197	Biscuit

Air Switches

Air switch with trim and button only. Mounts in a 1-1/4" dia. hole. Mounts on sinks and counters up to 1-1/2" thick.



JBX351S

JBX350S	Chrome
JBX357S	Brushed SS
JBX351S	Brushed Nickel
JBX352S	Oil Rubbed Bronze
JBX353S	Tuscan Bronze
JBX355S	Classic Bronze
JBX360S	White
JBX361S	Black
JBX361FS	Flat Black



JBX351

Air Switch Kits

Kit includes electrical plug, hose and switch. Mounts in a 1-1/4" dia. hole on sinks and counters up to 1-1/2" thick.

JBX350	Chrome
JBX357	Brushed SS
JBX351	Brushed Nickel
JBX352	Oil Rubbed Bronze
JBX353	Tuscan Bronze
JBX355	Classic Bronze
JBX361F	Flat Black
JBX360	White
JBX361	Black

P-Traps JB Signature

All brass construction 1-1/4" od.



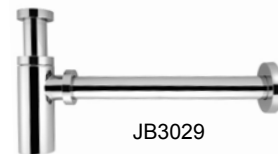
JB3000

JB3000	Brushed Nickel
JB3025	Oil Rubbed Bronze
JB3027	Classic Bronze
JB3020	Tuscan Bronze
JB3010	PVD Polished Brass

Bottle Traps Round

1-1/4" od all brass parts. Trap body has a cleanout on the bottom.

JB3029	Chrome Bottle Trap
--------	--------------------



JB3029

Extension Tubes

24428ORB	1-1/4" x 8" Slip Extension Oil Rubbed Bronze
----------	--



24428ORB



1257BSN

Box Flanges

1257BSN	1-1/2" od Box Flange Brushed Nickel
---------	-------------------------------------

Claw Conversion Kits Push & Seal

Kit includes snap-on face plate, claw, 1-1/4" Push & Seal cartridge, drain strainer and with brass bushing.

Item #	Description	Qty
JB3675	Conversion Kit Push & Seal CP bagged	10
JB3676	Brushed Nickel	10
JB3678	Oil Rubbed Bronze	10
JB3677	Classic Bronze	10



JB3676

Claw Re-Fit Trim Kits

Kit includes snap-on face plate, claw and Re-fit drain cartridge.

Re-fit cartridge is an oversized stopper that completely cover drain.

712ECCP	Re-Fit Trim Kit Lift & Turn CP, bagged	12
712ECBN	Brushed Nickel, bagged	12
712ECOR	Oil Rubbed Bronze, bagged	12
712ECCB	Classic Bronze, bagged	12
737ECBN	Re-Fit Trim Kit Push & Seal Brushed Nickel	12
737ECCB	Classic Bronze	12



712ECBN

Lift & Turn Two Hole Conversion Kits

Includes a brass shoe bushing.

JB3611	Brushed Nickel	1
JB3641	Oil Rubbed Bronze	1
JB3631	Tuscan Bronze	1
JB3635	Classic Bronze	1
JB3634	Aged Bronze	1



JB3611

Lift & Turn One Hole Conversion Kits

One hole face plate with cross bar. Includes a brass shoe bushing.

JB3610	Brushed Nickel	1
JB3640	Oil Rubbed Bronze	1
JB3630	Tuscan Bronze	1
JB3660	Classic Bronze	1



JB3610

Toe Touch Conversion Kits

One hole face plate with cross bar to fit two hole bathwaste head.

Includes a 1-1/2" x 1-1/4" brass shoe bushing.

JB3612	Brushed Nickel	1
JB3642	Oil Rubbed Bronze	1
JB3614	Brushed Nickel - Two Hole	



JB3642

Trip Lever Trim Kits

Trip lever face plate, screws, dome cover with screw.

Fits 1-1/4" strainer body.

JB3741	Oil Rubbed Bronze	1
JB3711	Brushed Nickel	1



JB3711

Universal Re-Fit Kits

Available in five finishes. Easy installation with our three size stem and oversize stopper. Great for new construction as well as remodel jobs. Save dollars with the easy installation. Change your one or two hole face plate for a complete new look. Attractive clam shell packaging for display.



Item #	Description	Qty
702FKIT	Chrome Re-Fit Kit includes face plate and stopper	6
702FBNKIT	Brushed Nickel	6
702FCBKIT	Classic Bronze	6
702FORKIT	Oil Rubbed Bronze	6
702FVBKIT	Tuscan Bronze	6

702F	Chrome Re-Fit Kit Cartridge only	1
702FBN	Brushed Nickel	1
702FCB	Classic Bronze	1
702FORB	Oil Rubbed Bronze	1
702FVB	Tuscan Bronze	1

Lift & Turn Lav Drains with overflow holes

Lift & turn shut off. Fits 1-1/2" drain openings. Threads measure 3-1/4" from the flange and overall length is 8". Tailpiece is 1-1/4" od. Not for use on sheet metal sinks i.e., stainless steel or copper.



JBD580

JBD580	Chrome
JBD581	Brushed Nickel
JBD582	Oil Rubbed Bronze
JBD586	Classic Bronze

Lift & Turn Lav Drains without overflow holes

Lift & turn shut off. Fits 1-1/2" drain openings. Threads measure 3-1/4" from the flange and overall length is 8". Tailpiece is 1-1/4" od. Not for use on sheet metal sinks i.e., stainless steel or copper.



JBD550

JBD550	Chrome
JBD551	Brushed Nickel
JBD552	Oil Rubbed Bronze
JBD554	PVD Polished Brass
JBD557	Classic Bronze

Lav 19 Hole Grid Drains

For 1-1/2" drain openings. No overflow holes. Threads measure 2-1/2" from the flange and overall length is 8-1/4". Tailpiece is 1-1/4" od. Not for use on sheet metal sinks.



JBD591

JBD590	Chrome
JBD591	Brushed Nickel
JBD592	Oil Rubbed Bronze
JBD594	PVD Polished Brass

Lav Pop-ups

With overflow holes. Only the top flange, stopper and lift rod are plated on the specified finish pop-ups.



1675P

1675P	Chrome
1675PVB	Tuscan Bronze
1675PSN	Brushed Nickel
1676VBL	Pop-up without overflow holes Tuscan Bronze

Vessel Drains

Stationary dome, no overflow holes. Fits 1-1/2" drain openings. Threads measure 2-7/8" from the flange and overall length is 7-1/2".

Item #	Description
1042VCP	Chrome



1042VCP

Finger Touch Lav Drains

Finger touch shut off, no overflow holes. Fits 1-1/2" drain openings. Threads measure 2-7/8" from the flange and overall length is 7-1/2".

Item #	Description
1042FTCP	Chrome
1042FTBN	Brushed Nickel
1042FTOR	Oil Rubbed Bronze
1042FTVB	Tuscan Bronze



1042FTCP

Deep Bar Strainers

No shut off function. Removable deep basket. Fits 2" and 2-1/2" openings.

1134HSN	Brushed Nickel
1134HBS	Brushed SS
1134HPVD	PVD Polished Brass
1134HVB	Tuscan Bronze



1134HPVD

Bar Strainers

Shut off function on mini basket. Fits 2" and 2-1/2" openings.

JBX301	Brushed Nickel
JBX302	Oil Rubbed Bronze
JBX305	Classic Bronze



JBX301

Angle Stops

1/4 turn ball valve. UPC and CSA approved. Supply stops with an "A" at the end of the part number comply with the 2014 Federal reduction of lead in drinking water act.

JB3250A	1/2" ips x 3/8" od Brushed Nickel
JB3255A	5/8" od x 3/8" od
JB3280A	1/2" ips x 3/8" od Oil Rubbed Bronze
JB3285A	5/8" od x 3/8" od

JB3275A	5/8" od x 3/8" od Tuscan Bronze
JB3247A	5/8" od x 3/8" od Classic Bronze

JB3265A	5/8" od x 3/8" od PVD Polished Brass
---------	---



JB3250A

Straight Stops

1/4 turn ball valve. UPC and CSA approved. Supply stops with an "A" at the end of the part number comply with the 2014 Federal reduction of lead in drinking water act.

JB3291A	5/8" od x 3/8" od Brushed Nickel
JB3294A	5/8" od x 3/8" od Oil Rubbed Bronze
JB3292A	5/8" od x 3/8" od Polished Brass
JB3298A	5/8" od x 3/8" od Classic Bronze



JB3291A

Lav Supply Kits

Kit includes, two oval handle 1/4 turn stops 5/8" od x 3/8" od, two 20" Lav supply tubes and two low flanges.



JBB300A

Item #	Description
JBB300A	Lav Supply Kits Angle Stops Brushed Nickel
JBB301A	PVD Polished Brass
JBB302A	Oil Rubbed Bronze
JBB303A	Tuscan Bronze
JBB305A	Classic Bronze

JBB310A	Lav Supply Kits, Straight Stops Brushed Nickel
JBB312A	Oil Rubbed Bronze
JBB315A	Classic Bronze
JBB311A	PVD Polished Brass

Closet Supply Kits

Kit includes, one oval handle 1/4 turn stops 5/8" od x 3/8" od, one 20" Closet supply tube and one low flange.



JBB320A

Item #	Description
JBB320A	Closet Supply Kits Angle Stop Brushed Nickel
JBB322A	Oil Rubbed Bronze
JBB326A	Classic Bronze
JBB323A	Tuscan Bronze
JBB321A	PVD Polished Brass

JBB330A	Closet Supply Kit Straight Stop Brushed Nickel
JBB332A	Oil Rubbed Bronze

Lav Supply Tubes

JB3103	3/8" od x 20" Brushed Nickel
JB3118	3/8" od x 20" Oil Rubbed Bronze
JB3113	3/8" od x 20" Tuscan Bronze
JB3104	3/8" od x 20" Classic Bronze
JB3108	3/8" od x 20" PVD Polished Brass



JB3104

Closet Supply Tubes

JB3201	3/8" od x 12" Brushed Nickel
JB3203	3/8" od x 20"
JB3204	1/2" od x 20"
JB3216	3/8" od x 12" Oil Rubbed Bronze
JB3218	3/8" od x 20"
JB3211	3/8" od x 12" Tuscan Bronze
JB3213	3/8" od x 20"
JB3224	3/8" od x 12" Classic Bronze
JB3206	3/8" od x 12" PVD Polished Brass
JB3208	3/8" od x 20"



JB3218

JB Metal Finish Cross Reference Chart

JB Signature Classic Bronze	–	Moen's Oil Rubbed Bronze
JB Signature Classic Bronze	–	Delta's Venetian Bronze
JB Signature Classic Bronze	–	Kohler's Oil Rubbed Bronze
JB Signature Classic Bronze	–	Luxart Oil Rubbed Bronze
JB Signature Oil Rubbed Bronze	–	Grohe's Oil Rubbed Bronze
JB Signature Oil Rubbed Bronze	–	Luxart Cafe

Low Flanges IPS

Item #	Description
JB3331	Oil Rubbed Bronze
JB3311	PVD Polished Brass
JB3300	1/2" ips Low Flange Brushed Nickel
JB3330	Oil Rubbed Bronze
JB3320	Tuscan Bronze



JB3301

Low Flanges Copper

Item #	Description
JB3305	5/8" od Low Flange Brushed Nickel
JB3335	Oil Rubbed Bronze
JB3325	Tuscan Bronze
JB3316	Classic Bronze
JB3315	PVD Polished Brass



JB3308

2 Screw Shower Strainers

Screw holes 2-5/8" center to center.
Strainer 4-1/4" diameter.

JB3560	Brushed Nickel
JB3563	Oil Rubbed Bronze
JB3562	Tuscan Bronze
JB3566	Classic Bronze
JB3561	PVD Polished Brass
JB3560BB	Brushed Bronze
JB3560FB	Flat Black



JB3561

Bell Flanges IPS

JB3341	1/2" ips Bell Flange Brushed Nickel
JB3351	PVD Polished Brass



JB3371

2 Screw Shower Strainers

Screw holes 3-3/8" center to center.
Strainer 4" diameter.

JB3580	Brushed Nickel
JB3583	Oil Rubbed Bronze
JB3581	PVD Polished Brass
JB3586	Classic Bronze
JB3584	Chrome
JB3580BB	Brushed Bronze
JB3580FB	Flat Black

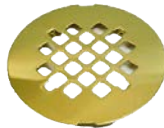


JB3580

Round Snap-in Shower Strainers

Prongs measure 3" tip to tip.
Strainer 4-1/4" diameter.

JB3550	Brushed Nickel
JB3553	Oil Rubbed Bronze
JB3556	Classic Bronze
JB3551	PVD Polished Brass
JB3551BB	Brushed Bronze
JB3551FB	Flat Black
JB3554	Chrome



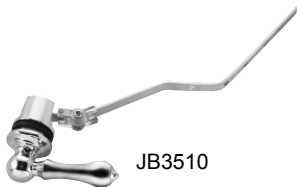
JB3551



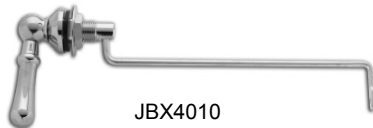
JB3501



JBX4020



JB3510



JBX4010



JBX4031



JBX4105

Universal Tank Levers

Front and side mount universal tank levers. The JB3510 series has a hinged adjustable arm and can be used for both front and side applications.

Item #	Description
JB3501	Front Mount Universal Tank Lever; Brushed Nickel
JB3504	Oil Rubbed Bronze
JB3503	Tuscan Bronze
JB3505	Classic Bronze
JB3502	Polished Brass

JBX4021	Brushed Nickel
JBX4022	Oil Rubbed Bronze
JBX4025	Classic Bronze

JB3510	Side & Front Mount Universal Tank Lever Chrome
JB3511	Brushed Nickel
JB3512	Oil Rubbed Bronze

Toto Tank Levers

Manufactured to OEM specifications.

Item #	Description
JBX4010	Side Mount Lever fits TOTO Carrollton Chrome
JBX4011	Brushed Nickel
JBX4012	Oil Rubbed Bronze
JBX4014	PVD Polished Brass

JBX4030	Side Mount Lever fits TOTO Drake Chrome
JBX4031	Brushed Nickel
JBX4032	Oil Rubbed Bronze

Kohler Tank Levers

Fits Kohler Wellworth units.

JBX4105	Kohler Wellworth Tank Lever Brushed Nickel
JBX4102	Oil Rubbed Bronze

JB Signature Cleaning Instructions

- 1) Do not use cleansers, soft scrub, alkali or acid based detergents. Cleaning products with a S.O.S. pad or Scotch Brite pad voids the warranty which includes PVD finishes, POM plastic and chrome finishes.
- 2) Liquids like coffee or vinegar lying in the bottom of the sink basin will stain finishes.
- 3) To prevent water spotting, always wipe finishes dry with a clean soft cloth.
- 4) For normal cleaning, just wipe with a damp cloth and dry with a soft cloth.
- 5) Use of plumbers putty on our POM plastic strainers and disposal trims will void the warranty. We recommend a quality bath and kitchen clear silicone caulk.

SOLUTIONS

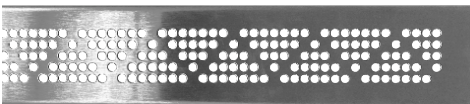
LINEAR DRAIN



Solutions Linear Drains by JB Products provide an economical alternative to complement a single-slope shower installation using a large-format tile, thin-gauged tile, or any other tile or stone installation.

Triangle Strainer

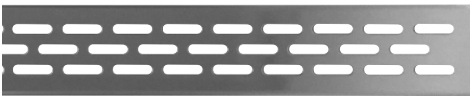
Size	Stainless	Oil Rubbed Bronze	Flat Black	Chrome	Qty
24"	JBS82415	JBS82416	JBS82417	JBS82418	1
32"	JBS83215	JBS83216	JBS83217	JBS83218	1
36"	JBS83615	JBS83616	JBS83617	JBS83618	1
42"	JBS84215	JBS84216	JBS84217	JBS84218	1
48"	JBS84815	JBS84816	JBS84817	JBS84818	1
54"	JBS85415	JBS85416	JBS85417	JBS85418	1
60"	JBS86015	JBS86016	JBS86017	JBS86018	1



Triangle
Strainer

Slotted Strainer

Size	Stainless	Oil Rubbed Bronze	Flat Black	Chrome	Qty
24"	JBS82406	JBS82407	JBS82408	JBS82409	1
32"	JBS83206	JBS83207	JBS83208	JBS83209	1
36"	JBS83606	JBS83607	JBS83608	JBS83609	1
42"	JBS84206	JBS84207	JBS84208	JBS84209	1
48"	JBS84806	JBS84807	JBS84808	JBS84809	1
54"	JBS85406	JBS85407	JBS85408	JBS85409	1
60"	JBS86006	JBS86007	JBS86008	JBS86009	1



Slotted Strainer



Tile-In Strainer

Tile-In Strainer

Size	Item #	Qty
24"	JBS82414	1
32"	JBS83214	1
36"	JBS83614	1
42"	JBS84214	1
48"	JBS84814	1
54"	JBS85414	1
60"	JBS86014	1

Drain Base

Size	Item #	Qty
24"	JBS9C242000	1
32"	JBS9C322000	1
36"	JBS9C362000	1
42"	JBS9C422000	1
48"	JBS9C482000	1
54"	JBS9C542000	1
60"	JBS9C602000	1



Drain Base

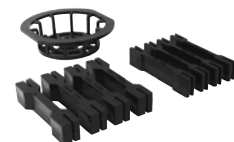
Accessories

Item #	Description	Qty
JBS8305	Hair Trap/ Strainer Leveler Set Combo	1
JBS8306	Hair Trap	1
JBS8307	Strainer Leveler Set	1
JBS8308	Clamping Ring Hub Transition	1

Clamping Ring Hub Transition



Hardware Kit
(Included with Strainer)





ACCESSORIES

F&C Plates CP Economy

CP light gauge steel, sure grip style.

Item #	Description	Qty
1237I	1/2" ips CP Sure Grip	12
1237J	3/4" ips	12
1237L	1-1/4" ips	12
1237M	1-1/2" ips	12
1237N	2" ips	12
1237P	1/2" cop CP Sure Grip	12
1237Q	3/4" cop	12



1237P

Low Flanges

Chrome plated steel. Sure grip style.

Item #	Description	Qty
1255A	3/8" ips CP Low Flange	100
1255B	1/2" ips	100
1255R	1-1/2" ips	100



1255M

1255M	5/8" od (1/2" copper)	100
1255MB	5/8" od Master Carton	2000
1255P	7/8" od (3/4" copper)	100

F&C Plates CP with Springs

CP heavy gauge steel with springs.

1236A	3/8" ips CP with Springs	12
1236B	1/2" ips	12
1236C	3/4" ips	12
1236F	1-1/2" ips	12
1236G	2" ips	12
1236I	3" ips	12
1236K	4" ips	1
1236O	1/2" cop CP with Springs	12
1236P	3/4" cop	12
1236S	1-1/2" cop	12
1236T	2" cop	12



1236F

Box Flanges

Chrome plated steel. Sure grip style. Dimensions are 1-1/2" high x 3" od.

1257A	1-1/4" od CP	50
1257B	1-1/2" od	50



1257B

Box Flanges Plastic

Standard box flange measures 1-5/8" high x 2-7/8" od. Deep box flange measures 2-1/4" high x 3-1/8" od.

880PVC	1-1/2" Deep Box Flange White	25
--------	------------------------------	----



880PVC

F&C Plates White Plastic

White plastic is paintable or use as is.

1239FW	1-1/2" ips	12
1239GW	2" ips	12



1239FW

1239NW	1/2" cop	12
--------	----------	----

Supply Tubes Pex

Supplied with ferrule. Rated at 100 PSI at 180° - NSF listed.

1930	3/8" od x 12" Lav	100
1931	3/8" od x 20"	100
1932	3/8" od x 30"	100
1933	3/8" od x 36"	100



1930

1934

1934	3/8" od x 12" Closet	100
1935	3/8" od x 20"	100
1936	3/8" od Compression Ring	100

F&C Plates CP Plastic

CP plastic. Will not rust or corrode.

1239A	3/8" ips CP Plastic	12
1239B	1/2" ips	12
1239C	3/4" ips	12
1239D	1" ips	12
1239E	1-1/4" ips	12
1239F	1-1/2" ips	12
1239F	1-1/2" ips Master Carton	240
1239G	2" ips	12
1239N	1/2" cop CP Plastic	12
1239N	1/2" cop Master Carton	1,080
1239O	3/4" cop	12
1239P	1" cop	12
1239Q	1-1/4" cop	12
1239S	2" cop	12



1239F

Compression Rings

1936	3/8" od Delrin Rings	100
------	----------------------	-----



1936

Basin Nut

1/2" - 14 x 3/8"

1215A	Basin Tailpiece Nut Brass	25
1215A	Volume Pricing	100



1215A



Dielectric Nipple

Electroplated steel nipple with non-corrosive thermoplastic liner prevents corrosion, lime and scale build-up. Maximum temperature 180°.

Item #	Description	Qty
1995C	3/4" x 3" Dielectric Nipple	50

Dielectric Unions

EPDM gasket for high temperatures. (300°F @ 50PSI), (180°F @ 250PSI) Patented gasket. Complies with AB1953.

1970	1/2" cop x 1/2" fip	30
1976	1/2" cop x 3/4" fip	30
1971	3/4" cop x 3/4" fip	30
1972	1" cop x 1" fip	20
1973	1-1/4" cop x 1-1/4" fip	12
1974	1-1/2" cop x 1-1/2" fip	12
1975	2" cop x 2" fip	4
1983	1/2" cop x 1/2" mip	20
1984	3/4" cop x 3/4" mip	20



1970



1979A

Dielectric Flanges

FIP threads to solder connections. EPDM gasket for high temperatures. (300°F @ 50PSI), (180°F @ 250PSI) Patented gasket. Lead Free

1978A	2-1/2" cop x 2-1/2" fip	4
1979A	3" cop x 3" fip	4
1980A	4" cop x 4" fip	2

Icemaker Kits

Includes self piercing saddle valve, fittings, rings, and 25' of plastic tubing.

1908A	Icemaker Kit, bagged	12
-------	----------------------	----



1908A

Brass Closet Bolts

Packaged with round washers and acorn nuts. Sold in carton quantities only.



1006LB

1006CBX	1/4" x 2-1/4" Brass Closet Bolts pair bagged with extra nuts and washers	50
1006LB	5/16" x 3-1/2" Brass Closet Bolts pair bagged	50

Break-Away Closet Bolts

Brass bolts, nuts and washers. Bagged pairs.



1005S

1005S	5/16" Break-Away Bolts	50
-------	------------------------	----



1005F

Close Couple Bolts Brass

All brass parts. Heads of both the nuts and bolts are oversized. Sold in pairs bagged.

Item #	Description	Qty
1005F	Brass Close Couple Bolts, pair	25
1005F	Volume Pricing	50



1185B



1185F

Closet Spuds

Cast brass body, brass nuts, rubber washer and friction ring.

1185B	1-1/2" Closet Spud	25
1185B	Volume Pricing	50

1185F	1" x 3/4" Urinal Spud	12
-------	-----------------------	----

Flush Valves

1016P	Plastic Flush Valve with blue vinyl flapper and SS chain	25
-------	--	----



1016P



1034B

Cock Hole Covers

Polished stainless steel.

1034B	2" with puddy cup	12
-------	-------------------	----



1137

Crumb Cups

Stainless steel.

1137	1" fits PO plug for lav	12
------	-------------------------	----

Tank Levers Universal

8" brass plated aluminum arms.

1021A	Universal Lever CP with die cast spud	25
1021A	Volume pricing	100
1021Z	Universal CP, die cast spud, brass arm made in USA	25



1021A



1392RS

Overflow Face Plates

Chrome plated die cast.

1392RS	Trip Lever Face Plate	25
1392RSS	with Screws	25



1672

Utility Shower

Industrial quality. Satin CP valve body has both upper and lower connections, thread or 1/2" copper sweat connection. Valve body is 3" cc. Galvanized riser is 21" high. Includes CP shower head and soap dish.

1672	Utility Shower	1
------	----------------	---

Shower Rods & Flanges

Polished aluminum, 1" od with a .025 wall thickness.

Individually wrapped.

Sold in carton quantities only.

Item #	Description	Qty
1274EO	5' Shower Rod only	50
1262AP	Adjustable Flanges CP ABS pair	50



Aerators

Dual threads are 15/16"- 27 male x 55/64" - 27 female. No Lead compliant.

0114MA	Dual Thread CP, 2.0 gpm, bagged	12
0114TA	Dual Thread in Display box, 6 per tube 72 aerators	1 box
0114TA	Volume pricing	2 box
0114TA	Volume pricing	4 box



Washing Machine Hoses

USA manufactured with Goodyear hose. Burst pressure 800 psi. Bagged with washers.

1519A	5ft Hose bagged	12
1519B	6ft Hose bagged	12



Radiator Coin Key Air Valve

1235B	Radiator Coin Key Air Valve CP 1/8" mip	100
1236	Air Valve Key only	100



Gas Tester Kit

Precision testing devise using a 35 oz gauge for quick test results.

Includes carrying case and instructions.

1515	Tester Kit with 35oz gauge	1
1515	Volume pricing	3
1515-4	Replacement Gauge 35 oz	1
1515-1	Replacement Pump Ball	1
1515-2	Replacement Air Valve	1



Pro-Vent

Made in the USA.

For secondary vent applications only.

PV140BB	Pro Vent ABS bulk box	50
---------	-----------------------	----



Waste Connectors

Brass nuts and compression rings. All male pipe connectors also are female sweat connection on the id.

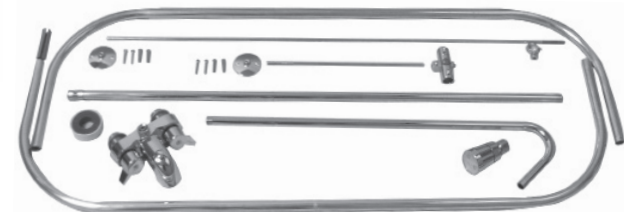
Item #	Description	Qty
1041H	1-1/2" fip x 1-1/2" od	12
1041F	1-1/2" fip x 1-1/4" od	12
1041D	1-1/2" mip x 1-1/2" od	12



Add-A-Shower

CP Diverter faucet 3-3/8" cc. Polished aluminum frame 3/4"od x 24" x 42". Two piece riser is 61" high. Includes a 36" ceiling support, 12" wall support and mounting hardware. CP plastic shower head.

1570	Add-A-Shower with Frame and Diverter Faucet	1
1570	Volume pricing	3
1570	Volume pricing	6
1570	Volume pricing	10



1515

1518

Diverter Faucet for 1570

CP diverter faucet 3-3/8" cc.

1576	Diverter Faucet	1
------	-----------------	---



1576

1518	Disposal Connector with Clamps	1
------	--------------------------------	---

Add-A-Shower Components

1570A	Frame only, Aluminum 3/4"od x 24" x 42"	1
1570R	53" CP Riser	1
1570S	65" CP Riser	1
1570B	3-Way Bracket for 1570	1
1570E	Wall support, Flange and 3-way bracket	1
1570T	36" Ceiling support rod, flange & 3/4" loop	1



1570E



1570T



1570B

Shower Drains

Snap-in strainer, tear resistant fiber washer, UPC listed.

Item #	Description	Qty
JB3590	Plastic no caulk shower drain w/ wrench	20
JB3595	Plastic no caulk shower drain w/ wrench	20



Test Gauge Assemblies

Class 1A Gauge. over pressurization will void warranty
One year warranty from date stamp on gauge

Item #	Description	Qty
1540-15	15 lb. Test gauge assembly, 4" face and pressure snubber	1
1540-5	5 lb. Test gauge assembly, 4" face and pressure snubber	1



Vacuum Breaker

Male hose thread. Break-off screw for permanent attachment
Meets NSF/ANSI 61. Meets ASSE 1011/CSA B64.2
Max. operating temp. rating: 180 degrees F/82 degrees C
Max. operating pressure rating: 125 PSI
Meets California Lead Plumbing Law NSF/ANSI 372

Item #	Description	Qty
1520	3/4" Lead free vacuum breaker	20



Handi-Plug

Can be reused in multiple applications. 1/2" MIP connection. Made of plastic.

Item #	Description	Qty
1700	Combination Stub Out & Test Plug	50



PVC Shower Pan Liner



Cut-to-Length PVC Shower Pan Liner

Pick up and go pan liner in sizes that configure to today's common shower sizes.

Item #	Description	Qty
JBS1361	PVC, Cut-to-Length (5'x 6')	9
JBS1362	PVC, Cut-to-Length (5' x 8')	4
JBS1363	PVC, Cut-to-Length (6' x 10')	4



Shower Pan Liner

Shower pan liner made from flexible Polyvinyl Chloride (PVC). Meets plumbing code requirements for shower waterproofing applications. Use under full mortar bed installations as a shower pan liner.

Item #	Description	Qty
JBS1040-450	4' X 50'	1
JBS1040-4100	4' x 100'	1
JBS1040-540	5' X 40' (1.5m x 12.2m) 200 sq. ft.	1
JBS1040-5100	5' X 100' (1.5m x 30.5m) 500 sq. ft.	1
JBS1040-650	6' X 50' (1.8m x 15.2m) 300 sq. ft.	1
JBS1040-6100	6' X 100' (1.8m x 30.5m) 600 sq. ft.	1
JBS1040-6500	6' X 500'	1
JBS275	PVC Preformed Outside Corner	1

Cleanout Cover Plates

Made of durable, high-impact plastic. Resistant to rust and corrosion.

Flat

Item #	Description	Qty
JBSB104FC	4.25" chrome	25
JBSB104FW	4.25" white	25
JBSB105FC	5.25" chrome	25
JBSB105FW	5.25" white	25
JBSB107FC	7.25" chrome	25
JBSB107FW	7.25" white	25
JBSB109FC	9.25" chrome	10
JBSB109FW	9.25" white	10



Bell

Item #	Description	Qty
JBSB105BC	5.25" chrome	25
JBSB105BW	5.25" white	25
JBSB107BC	7.25" chrome	25
JBSB107BW	7.25" white	25
JBSB109BC	9.25" chrome	10
JBSB109BW	9.25" white	10



Utility Tub Boxes

All around utility tub boxes in two sizes for all recess and cementing needs. Made of durable styrene plastic.

Item #	Description	Qty
JBSB1410	Styrene utility tub box	36
JBSB1313	Styrene utility tub box	12
JBSBT2160	HDPE plastic tub box	12



JBSB1410



JBSBT2160

Washer Machine Pans

Made of heavy gauge, high-impact plastic. Resistant to rust and corrosion.

Item #	Description	Qty
JBSBWMSP1U	29" x 27" undrilled	10
JBSBWMSP1D	29" x 27" drilled	10



HVAC Condensate Drain Pans

Protects against water damage caused by leaking air handling units. Includes 1" drain adapter fitting.

Item #	Description	Qty
JBSBCDP3026	31" x 26"	6
JBSBCDP3714	37.5" x 14.5"	6



Organizational & Tote Trays

A variety of organizational trays for different needs. Made of no stick material.

Item #	Description	Qty
JBSBT1000	15" x 9" x 3"	10
JBSBT1000XD	JBSBT1000 Dividers	1
JBSBT1025	16.75" x 11.75" x 4.5"	5
JBSBT1050	15" x 9" x 5"	10
JBSBT1050XD	JBSBT1050 Dividers	1
JBSBT1075	24" x 12" x 6"	5
JBSBT1075XD	JBSBT1075 Dividers	1

JBSBT1075



Saddle Trays

Item #	Description	Qty
JBSBT1065	22" x 14" x 8"	5
JBSBT1065L	JBSBT1065 with Lid	1
JBSBT1065XD	JBSBT1065 Dividers	1

JBSBT1065



Dirt Rider & Chemical Trays

Item #	Description	Qty
JBSBT1075DR	29" x 14" x 3.5"	5
JBSBT1075DRTT	JBSBT1075DR/ JBSBT1075 combo	1
JBSBT1040	13" x 20.5" x 2.75"	5

JBSBT1040



Nipple Caddies

Made of high density polyethylene. Bottom design holds nipples up and keeps them out of water and other liquids. Will spring back into shape when bent or crushed.

Item #	Description	Qty
JBSBT1005	11.25" x 7.75" x 8.75"; holds .5" nipples	12
JBSBT1007	13.75" x 8" x 8.75"; holds .75" nipples	12
JBSBT1010	15.25" x 8.25" x 8.75"; holds 1" nipples	12
JBSBT1015	21.25" x 7.25" x 9.75"; holds 1.5" nipples	12
JBSBT1020	23.5" x 8.75" x 10.5"; holds 2" nipples	12
JBSBT1057	JBSBT1005 & JBSBT1007 combo	12

JBSBT1010



JBSBT1005



Water Heater Pans

Protects against water damage caused by leaking water heaters. Available with or without drain hole in the side. Resistant to rust and corrosion.

Drilled

Item #	Description	Qty
JBSBWHP201D	19.5" ID/ 21" OD	20
JBSBWHP221D	22.5" ID/ 24.5" OD	20
JBSBWHP241D	23.5" ID/ 25.25" OD	20
JBSBWHP261D	26" ID/ 28" OD	20
JBSBWHP281D	27.5" ID/ 29" OD	20
JBSBWHP301D	30" ID/ 31.5" OD	6



Item #	Description	Qty
JBSBSPF100	1" Adapter	1

Undrilled

Item #	Description	Qty
JBSBWHP191U	19" ID	20
JBSBWHP201U	19.5" ID/ 21" OD	20
JBSBWHP221U	22.5" ID/ 24.5" OD	20
JBSBWHP241U	23.5" ID/ 25.25" OD	20
JBSBWHP261U	26" ID/ 28" OD	20
JBSBWHP281U	27.5" ID/ 29" OD	20
JBSBWHP301U	30" ID/ 31.5" OD	6



Access Panels

Provides access to pumps on whirlpools, spas, tub/shower valve bodies, hidden shut-off or regulating valves, trap primers, clean-outs, etc.

Item #	Description	Qty
JBSBAP55	7.5" x 8" OD	12
JBSBAP88	11.75" x 11.75" OD	12
JBSBAP96	12.375" x 9.5" OD	12
JBSBAP1212	14.75" x 14.625" OD	12
JBSBAP1414	16.75" x 16.625" OD	12
JBSBAP1426	16.75" x 29.5" OD	12



Access Covers

Inexpensive solution to cover an access. Pre-drilled holes in corners

Item #	Description	Qty
JBSBACF1212	12" x 12"	20
JBSBACF1717	17" x 17"	20



Foam & Wrap

Item #	Description	Qty
JBSBFS44	4" x 44" single use	60
JBSBFS82	4" x 82'	5
JBSBHCW24	.125" x 2" x 40' multi-purpose foam tape	24



Handi Wrap
Multi-Purpose Foam Tape



JBSBFS82

Tub Protectors

Made of heavy gauge high impact plastic (HIPS/ Styrene). No setup or assembly time required.

Foam Bottom

Item #	Description	Qty
JBSBTP603014	60" x 30" x 14"	35
JBSBTP603016	60" x 30" x 16"	35
JBSBTP604216	60" x 42" x 16"	25
JBSBTP604220	60" x 42" x 20"	25
JBSBTP724220	72" x 42" x 20"	25

No Foam Bottom

Item #	Description	Qty
JBSBTP603014NF	60" x 30" x 14"	35
JBSBTP603016NF	60" x 30" x 16"	35
JBSBTP604216NF	60" x 42" x 16"	25
JBSBTP604216NF	60" x 42" x 16"	25



Shower Base Protectors

Made of high-impact plastic with foam bottom. Foam pad grips shower base to protect finish from abrasive action.

Level Floor

Item #	Description	Qty
JBSBSP4057	40" x 56.75"	35
JBSBSP4060	39.5" x 60"	35
JBSBSP3470	34" x 70"	35
JBSBSP3640	36" x 39.5"	35
JBSBSP4048	39.5" x 48"	35
JBSBSP2547	25" x 47.25"	35

Slant Floor

Item #	Description	Qty
JBSBSP6036SF	60" x 36"	35
JBSBSP4836SF	48" x 36"	35

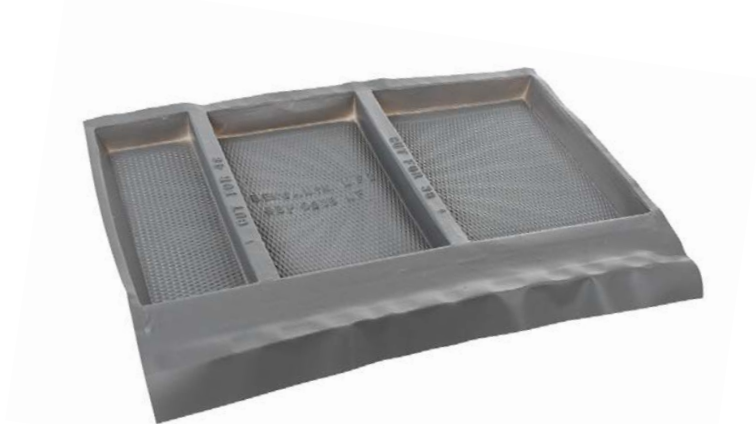


Multi-Fit Shower Base Protector

Item #	Description	Qty
JBSBSP6036MF	58" x 35" x 3"	50
JBSBSP6040MF	58" x 40" x 3"	50
JBSBSP6042MF	58" x 42" x 3"	50

Multi-Fit Shower Base Protector fits 9 sizes of shower bases

- Can be used right out of the box for 60" x 32", 60" x 34", or 60" x 36" bases
- Small left end can be cut for use in 48" x 32", 48" x 34", 48" x 36" bases
- Large right end can be cut for use in 36" x 32", 36" x 34", or 36" x 36" bases





CHEMICALS

Gasoil® Soft-Set

Our top-selling general purpose PTFE sealant. Perfect for new work. Remains pliable in cold temperatures, non-hardening, non-separating, Not for use on oxygen. UL, CSA, NSF approved. Temperature range: -100°F to 600°F. Pressure range: 10,000 psi sealing liquids; to 3,000 psi sealing gases. Sold in case quantities only.

Item #	Size	Qty
SS02	2 oz. tube	24
SS04	1/4 pint brush top can	24
SS08	1/2 pint	24
SS16	1 pint	12
SB32	1 quart	6



SS16

Gasoil® NT

Soft setting for applications requiring grit-free non-PTFE compounds. No fillers to contaminate gas lines. Use on pipes for potable water and food products. Not for use on oxygen. NSF approved. Temperature range: -50°F to 400°F. Pressure range: 10,000 psi sealing liquids; to 3,000 psi sealing gases. Sold in case quantities only.

NT08-N	1/2 pint brush top can Gasoil NT Thread Sealant	24
NT16-N	1 pint	12



NT16

Gasoil® Hard Set

Hard setting, fast-drying, red varnish sealant. Excellent resistance to all petroleum products, refrigerants, propane, kerosene, steam and more. Not for use on oxygen or plastic. Temperature range: -60°F to 350°F. Pressure range: 500 psi sealing face or butt joints; to 15,000 psi for threaded connections. Sold in case quantities only. UL approved.

BT04	1/4 pt brush top can	24
BT08	1/2 pint	24
BT16	1 pint	12
FT32	1 quart flat top	6



BT04

PLS2®

Textured, non-hardening, opaque gray paste. Ideal for pneumatic and LPG applications. Not for oxygen. UL, CSA approved. Temperature range: -100°F to 600°F. Pressure range: 10,000 psi sealing liquids; to 3,000 psi sealing gases. Sold in case quantities only.

PB04-N	1/4 pint brush top can	24
PB16-N	1 pint	6



PB16-N

Fas-Seal ATS® Anaerobic Sealant with PTFE

Forms a tough, insoluble, vibration-proof seal. Ideal for air conditioning lines, pneumatic lines, air compressor hoses, flared fittings and hydraulic lines. Non-shrinking. Not for use on oxygen. Temperature range: -65°F to 375°F. Pressure range: 10,000 psi. Sold in case quantities only.

AS05	50 ml tube Fas-Seal-ATS	10
AS25	250 ml tube	10



AS05



VM16

Venom® Soft-Set Pipe Sealant

Let nothing escape. Soft setting sealant with PTFE.

Perfect for new work. Remains pliable in cold temperatures, non-hardening. Not for use on oxygen. UL, CSA, NSF approved.

Temperature range: -100°F to 600°F. Pressure range: 10,000 psi sealing liquids; to 3,000 psi sealing gases. Sold in case quantities only.

Item #	Size	Qty
VM04	1/4 pint brush top can	24
VM08	1/2 pint brush top can	24
VM16	1 pint brush top can	12



RE12

Free All® Deep Penetrating Oil

Free All Deep Penetrating Oil, penetrates rust, scale and corrosion instantly! The Rust Eater. Specifically formulated rust eating agent is ideal for plumbing. Silicone free. Sold in case quantities only.

Item #	Size	Qty
RE01	1 oz. aerosol Free All Penetrating Oil, The Rust Eater	12
RE06	6 oz. aerosol (old # FA06)	12
RE12	11 oz. aerosol (old # FA12)	12
FS16	1 pint spray bottle	12



LA12

Lube-It-All®

Lubricant contains molybdenum disulphide for superior performance and is silicone free. Lube-It-All displaces 1,200 times its volume in water on surfaces and repels moisture to prevent corrosion.

Temperature range: -300°F to 450°F. Sold in case quantities only.

LA01	1 oz. aerosol Lube-It All	25
LA06	6 oz. aerosol	12
LA12	11 oz. aerosol	12



EF12

Expanding Foam

Insulates and seals cracks, gaps and openings to create an air tight bond. 3 to 1 expansion factor. Dries to the touch in 30 minutes, cures in four hours. UL surface burn test: Flame Spread: 10, Smoke Development: 15, Burn Temperature: 240°F. Sold in case quantities only.

EF12	12 oz. aerosol Expanding Foam	12
------	-------------------------------	----

Stainless Steel Polish

Renews stainless steel and chrome surfaces in one application.

Removes tarnish, residues, oxidation and leaves a repellent coating.

Sold in case quantities only.

SC16	16 oz. aerosol Stainless Steel Polish	12
------	---------------------------------------	----

Venom® PTFE Thred Tape

Let nothing escape. 99.9% Pure, Professional Grade PTFE Tape with No Contaminating Pigments or Dyes. Safe for use with Potable Water. Universal PTFE Tape that can be used with a variety of piping materials.

Item #	Size	Qty
VM520-MC	1/2" x 520"	100
VM520-34-MC	3/4" x 520"	70
VM520-1-MC	1" x 520"	50
VM1500-10	1/2" x 1500"	10
VM1500-36	1/2" x 1500"	36
VM1500-MC	1/2" x 1500"	100
VM1500-34-MC	3/4" x 1500"	150
VM1500-1-MC	1" x 1500"	140



VM1500

PTFE Rope

Ideal for packing valves and faucets. Quickly makes any gasket

Item #	Description	Qty
ZJ11	Zip Joint PTFE Rope 3/32" od x 25 ft coils	6
ZJ12	3/32" od x 50 ft	6
ZJ13	5/32" od x 25 ft	6



ZJ11

Plumbers Grade PTFE Tape

Economy grade PTFE tape. Sold by case.

1901D	1/2" x 520"	100
1901H	3/4" x 260"	140
1901E	3/4" x 520"	100
1901F	1" x 520"	50



1901D

Yellow PTFE Tape

Designed for chemical installations and sealing lines carrying natural gas, propane, butane and oil. CSA approved, UL listed thread sealant 131N, Meets MIL Spec MIL-AA-58092.

YT70-24	1/2" x 260" rolls	24
YT70	1/2" x 260"	144
YT71	1/2" x 520"	100
YT75	1" x 520"	100



YT70

Green PTFE Tape

Designed for sealing oxygen based lines. UL listed thread sealant 131N. Meets MIL Spec MIL-AA-58092.

GT90-24	1/2" x 260" rolls	24
GT90	1/2" x 260"	144



GT90

Pink PTFE Tape

Designed for sealing water and or steam lines. UL listed thread sealant 131N. Meets MIL Spec MIL-AA-58092.

PT80-24	1/2" x 260" rolls	24
PT80	1/2" x 260"	144



PT80

Nickel Tape - Stainless Steel

Designed for stainless steel threads. Nickel base prevents seizing and galling. UL listed thread sealant 561R. Meets MIL Spec MIL-T-27730A. Sold by case only.

SA26	1/2" x 260" rolls	40
SA26-34	3/4" x 260"	40



SA26

Gasola Extreme Temperature Leak Detector

Not for use on oxygen systems. Temperature range: -10°F to 350°F. Sold in case quantities only.

LT08	8 oz. bottle Gasola® Leak Tech Gold w/ Dauber	12
LS16	1 pint spray bottle	12
LT28	1 gallon	4
LT55	55 gallon drum	1



LS16



LT08

Tub O' Towels®

Tub O' Towels are pre-moistened with our exclusive 9 different cleaning solutions that removes grease, tar, ink, paint, permanent marker, PVC cement and other hard-to-remove soils. Tub O' Towels are gentle on hands as they contain lanolin, aloe vera and vitamin E.

TW90 towels are 10" x 12" and TW40 towels are 7" x 8".

Item #	Description	Qty
TW40	TW40 contains 40 towels	12
TW90	TW90 contains 90 towels	6
TW40-CD	TW40 Counter Display (12 per display)	1 display
TW90-CD	TW90 Counter Display (6 per display)	1 display
TW90-STK	Floor Stack Display, 24 TW90	1 display
TWMXD-FD	Mixed Floor Display, 24 TW40 & 6 TW90	1 display
TW01-GR	Gravity Feed Box 100 single pouches	1 display



TW90

TW40

Cutting Oils

Light and dark cutting oils are both listed by the EPA and OSHA as non-carcinogenic. Sold in case quantities only.

WL28	Light Cutting Oil 1 gallon	4
WL32	1 quart	12

WD28	Dark Cutting Oil 1 gallon	4
WD32	1 quart	12

Tub O' Scrub®

Removes tough grime. Biodegradable. Won't clog skin. Soft on skin. No Water Needed. Pumice Free.

TS18	18 oz. Squeeze Bottle	12
TS28	28 oz. With Pump	4



TS28

TS18

Cable Ties White

CT04	4" White Cable Ties, 18 Tensile Strength, 100 per bag	10 bags
CT06	6"	10 bags
CT08-18	8"	10 bags
CT05	5" White Cable Ties, 40 Tensile Strength, 100 per bag	10 bags
CT08	8"	10 bags
CT07	7" White Cable Ties, 50 Tensile Strength, 100 per bag	10 bags
CT11	11"	10 bags
CT14	14"	10 bags
CT17	17"	10 bags
CT08-120	8" White Cable Ties, 120 Tensile Strength, 100 per bag	10 bags
CT14-120	14"	10 bags
CT18	18"	10 bags
CT24	24" White Cable Ties, 175 tensile Strength, 50 per bag	5 bags
CT36	36"	5 bags
CT48	48"	5 bags

Cable Ties Black

CB04	4" Black Cable Ties, 18 Tensile Strength, 100 per bag	10 bags
CB06	6"	10 bags
CB08-18	8"	10 bags
CB05	5" Black Cable Ties, 40 Tensile Strength, 100 per bag	10 bags
CB08	8"	10 bags
CB07	7" Black Cable Ties, 50 Tensile Strength, 100 per bag	10 bags
CB11	11"	10 bags
CB14	14"	10 bags
CB17	17"	10 bags
CB08-120	8" Black Cable Ties, 120 Tensile Strength, 100 per bag	10 bags
CB14-120	14"	10 bags
CB18	18"	10 bags
CB24	24" Black Cable Ties, 175 tensile Strength, 50 per bag	5 bags
CB30	30"	5 bags
CB36	36"	5 bags
CB48	48"	5 bags

CONDITIONS OF SALE

This catalog contains product specifications of certain products sold by JB Products. JB Products may, from time to time, discontinue, change, or otherwise modify without notice any of the products listed herein. Possession of our catalog is not to be construed as an offer to sell the goods listed herein.

Transportation

Freight charges may be prepaid on certain dollar amounts for a shipment to one destination in the continental United States. Otherwise freight terms are F.O.B. South Bend, Indiana.

Broken Cartons

Broken cartons are usually not allowed. Items should be ordered in multiples of standard package quantities. Product orders for less than standard package quantities may be increased to standard package quantities.

Minimum Order

No order will be processed for less than a \$50 invoice minimum charge.

Shortage or Variance

No claims for variances from or shortages in orders will be considered unless presented within 2 days after receipt of goods.

Returned Goods

Merchandise may not be returned for credit unless the Seller has agreed to accept them in writing. Where returns are accepted a minimum deduction of 20% will be made for handling. All transportation costs for returned goods must be paid by the Buyer. In any event, only saleable merchandise of standard manufacture may be returned for credit.

JB PRODUCTS WARRANTY

JB PRODUCTS warrants to its immediate customers that goods shown and described in this catalog will be free from defects in material and workmanship, under normal usage and service for one year* from the date of JB Products invoice to its immediate customer's place of business where the goods were originally shipped by JB PRODUCTS.

*The following finishes have a 90 day warranty. Oil Rubbed Bronze (metal), Venetian Bronze, Classic Bronze, Aged Bronze, Aged Pewter. These are lacquered coated finishes. The warranty is void if products were misused, abused or the cleaning instructions below were not followed. Chrome is warranted for one year.

JB PRODUCTS shall not have the obligation to pay for **any labor costs or any other expenses** incurred by its customers in replacing any such defective goods. JB PRODUCTS shall not be liable for any damages, losses, costs, or expenses resulting from loss of use of the goods, loss of time, inconvenience, loss or damage to real or personal property, loss of income, loss of profits, or personal injuries. JB PRODUCTS shall not have the obligation to replace any goods or pay costs incurred in shipping replacements for goods which have been the subject of accident, negligence, misuse or abuse. The obligation of JB PRODUCTS under this warranty is expressly limited to replacement of the defective goods and shipping costs specified above.

JB PRODUCTS EXPRESSLY DISCLAIMS THE IMPLIED WARRANTIES OF MERCHANTABILITY AND FITNESS FOR A PARTICULAR PURPOSE.

This warranty is in lieu of all other warranties. No representative of JB PRODUCTS has the authority to make any other warranties, express or implied, or to assume any obligations other than those specified above, on behalf of JB PRODUCTS, and any such warranties and obligations shall not be binding upon JB PRODUCTS. The rights created by this warranty may not be assigned unless the express written consent of JB PRODUCTS is first obtained.

A		C		F		L	
Access Covers	85	Cable Ties	92	F&C Plates	78	L.A. Code Traps	57
Access Panels	85	Cartridges, Bath Strainer	41	Face Plates & Screws	41	Lav Drains	70
Add-A-Shower	80	Cast Commercial Strainer	58	Fas-Seal	89	Lav Grid Drains	57, 70
Aerators	80	Ceiling Support Rods	80	Fire Rated Ice Maker Boxes	15	Lav Lift & Turn	70
Air Coin Key Vents	80	Center Outlet Wastes Brass	52	Fire Rated Washing Machine Boxes	15	Lav Supply Kits Decorative	72
Air Gaps	9	Center Outlet Wastes Plastic	8	Finger Touch Drains	71	Lav Supply Tubes Decorative	72
Air Gaps Decorative	68	Chemical Trays	84	Flanged Tailpieces Brass	53	Leak Detector	91
Air Switches	68	Claw Bathwaste Kits	33	Flanged Tailpieces Plastic	9	Lift & Turn Lav Drains	70
Air Admittance Valves	25	Cleanout Cover Plates	83	Flanges Decorative	73	Linear Drain Systems	75
		Close Couple Bolts	79	Flanges Low CP	78	Lotion Dispensers	53
		Close Coupled		Flanges Low Plastic	78	Low Flanges CP	78
		• Bolts	79	Flat Strainer Grid Drain	62	Low Flanges Decorative	73
		• Spuds	79	Flat Top Sink Strainer	62	Lube-It-All	90
B		Crumb Cups	79	Flush Valves	79		
Baffle Tees Brass	54	Cutting Oils	92	Foam & Wrap	86	M	
Baffle Tees Plastic	8			Four Prong Basket Strainer	61	Marvel Adapters Brass	80
Ball Bearing Lock Strainer	61			Free All Penetrating Oil	90	Marvel Adapters Plastic	10
Bar Plug Brass	62	D		Full Kits		Multi-Fit Shower Base Protector	87
Bar Strainers	71	Deep Bar Strainers	71	• Lift & Turn	36		
Bar Strainers Decorative	71	Deep Cup SS Strainers	60	• Push & Seal	37	N	
Bath Strainers	41	Dielectric		• Toe Touch	37	Nickel PTFE Tape	91
Bathwastes		• Flanges	79	G		Nipple Caddies	84
• Brass	42	• Nipples	79	Gas Tester Kit	80	Nuts	
• Claw	33	• Unions	79	Gasola		• Basin	78
• Direct	37	Direct Drains	40	• Hard Set	89	• Locknuts, Strainer	60
• Full Kits	36	Direct Drains, Half Kits	40	• NT	89	• Metal Slip	51
• Half Kits	28	Dirt Rider	84	• Soft Set	89	• Plastic Slip	10
• Slot Lock	44	Dishwasher Tailpieces Brass	55	Grab Bars	58	O	
• Strainer Cartridges	41	Dishwasher Tailpieces Plastic	7	Grid Drains	57, 70	Organizational & Tote Trays	84
• Test Kits	35	Disposal		Green PTFE Tapes	91	O Rings	13
• Tubular Lift & Turn	38	• Connectors	80			Outlet Tee Brass	54
• Tubular Push & Seal	39	• Flanges Metal for ISE	65			Outlet Tee Plastic	8
• Tubular Toe Touch	38	• Switch	68	H		Overflow Face Plates	79
• Trip Lever	40	• Trims for Evolution	66	Handi Wrap Foam Tape	86	Overflow Washers	35
Bayonet P-Traps	13	• Washer	51	Half Kits			
Bell Flanges Decorative	73	• Waste Brass	52	• ABS Lift & Turn	29	P	
Bolts Closet	79	• Waste Plastic	7	• ABS Push & Seal	32	Penetrating Oil	90
Bottle Traps	68	Double		• ABS Toe Touch	30	Pex Supply Tubes	78
Box Flanges Brass	78	• Flanged Tailpieces Brass	53	• PVC Lift & Turn	28	Pink PTFE Tape	91
Box Flanges Plastic	10	• Flanged Tailpieces Plastic	9	• PVC Push & Seal	32	Plastic P-Traps	4
Boxes Ice Maker	21	• Offsets Brass	54	• PVC Toe Touch	30	Plastic P-Traps, Plated	5
Boxes Washing Machine	16	• Offsets Plastic	10	Hammers, Water	24	PLS2	89
Branch Tailpieces Plastic	9	• Slip Extensions Brass	54	Hand Soap	92	PO Plugs Brass	54
Bar Plug Brass	62	• Slip Extensions Plastic	9	Handicap Trap Covers	57	Pop-Ups	70
Brass Bathwaste	42	E		Hi-Line Tailpiece	53	Protect-A-Trap Cover	57
Brass Tubular		Easy Mount Strainer	62	HVAC Condensate Drain Pans	83	Pro-Vent	80
• Dishwasher Tailpieces	55	Economy Strainers Metal	61			PTFE Rope	91
• Disposer Wastes	52	Economy Strainers Plastic	65	I		PTFE Tapes	91
• Double Offsets	54	End Outlet Wastes Brass	52	Ice Maker Boxes	21	P-Traps	
• Ground Joint P-Traps	50	End Outlet Wastes Plastic	6	Ice Maker Kits	79	• Bayonet	13
• J Bends	50	Evolution Trims	66	Ice Maker Valves	26	• Brass	49
• PO Plugs	54	Expanding Foam	90	InSinkErator		• Ground Joint	50
• P-Traps	49			• Disposal Flanges	65	• Decorative	68
• Repair P-Traps	51			• Disposal Trims	65	• Plastic	4
• Semi-Cast Traps	57			• Evolution Trims	66	• Reducing Wall Arm	5
• Sink Wastes	52					• Repair Brass	51
• Sink Traps	51			J		• Repair Plastic	5
• Slip Extensions	54			JB250 Deluxe Strainer	60	• Wall Bends Brass	50
• Slip Joint Connectors	55			J-Bends Brass	50	• Wall Bends Plastic	5
• S-Traps	52			J-Bends Plastic	5	• Solvent Weld Adapter	10
• Tailpieces	53			Junior Strainers SS	62		
• Tees	54					Q	
• Threaded Tubes	53					Quick Mount Strainer	61
• Wall Bends	50						
• Waste Arms	53					R	
Break-Away Closet Bolts	79					Radiator Air Valve	80
Breakaway Head Full Kits	36					Re-Fit Bath Kits	56
Breakaway Head Half Kits	29					Repair Traps Brass	51
						Repair Traps Plastic	5
						Replacement Baskets	53
						Rough-In Kits	28

INDEX

S	
S-Traps Brass	52
S-Traps Plastic	5
Saddle Trays	84
Schrader Air Valve	80
Semi-Cast Traps	57
Shoe Outlet Bathwastes	39
Shower	
• Base Protectors	87
• Drain	81
• Pan Liners	82
• Rods	80
• Rod Ceiling Support	80
• Strainers Decorative	73
Sink	
• Hole Covers	79
• Hole Covers Decorative	67
• Traps Brass	51
• Traps Plastic	5
• Wastes Brass	52
• Wastes Plastic	6
Slip	
• Elbows Brass	55
• Elbows Plastic	10
• Extensions Brass	54
• Extensions Plastic	9
• Joint Connectors Brass	55
• Joint Connectors Plastic	10
• Joint Washers	10
• Nuts Metal	51
• Nuts Plastic	10
• Tees Brass	54
• Tees Plastic	8
Snap-In Shower Drain	81
Soap Lotion Dispensers	53
Soft-Set Gasoila	89
Solvent Weld Adapter	10
Splash Guard	66
Spin & Lock Strainer	61
Split Flanges	63
Stainless Steel Polish	90
Stops, Decorative	71
Strainers	
• Ball Bearing	61
• Bar Decorative	71
• Bar SS	62
• Deep Bar	71
• Extension Bolt	64
• JB250	58
• Kitchen Decorative	64
• Kitchen SS	60
• Spin & Lock	61
• Spring Post	60
• Stick Post	60
• Super Seal	61
• Thumbscrew	61
Switches, Air	68
Supply	
• Kits Decorative	72
• Nuts	78
• Stops Decorative	71
• Tubes Decorative	72
• Tubes Pex	78

T	
Tailpieces	
• Branch Brass	55
• Branch Plastic	9
• Flanged Brass	53
• Flanged Plastic	9
• Reducing Brass	53
• Short for Waste Tee	53
• T.O.E.	53
• Washers Poly	10
• Washers Rubber	10
Tank Levers CP	79
Tank Levers Decorative	74
Teflon Tapes	91
Test Cap	10
Test Gauge Assembly	81
Threaded Tubes	53
Track Packs Half Wastes	32
Trap Primer Tailpieces	55
Trim Kits	34
Trip Lever Bathwastes	40
Trip Lever Trim Kits	69
Tub O' Scrub	92
Tub O' Towels	92
Tub Protectors	86
Tubular Bathwastes	
• Lift & Turn	38
• Push & Seal	39
• Shoe Outlet	39
• Toe Touch	38
• Trip Lever	40
Twin Wash Boxes	18

U	
Unions Dielectric	79
Universal Baskets	62
Utility Shower	79
Utility Tub Boxes	83

V	
Valves	
• Air Admittance	25
• Decorative	71
• Decorative Stops	71
• Stops, Poly	26
Venom Thread Sealant	90
Vaccum Breaker	81
Vessel Drains	71

W	
Wall Bends Brass	50
Wall Bends Plastic	5
Washers	10
Washing Machine	
• Boxes	16
• Pans	83
• Hoses	80
• Valves	26
Waste Arms Brass	53
Waste Arms Plastic	8
Wastes	
• Center Outlet Brass	52
• Center Outlet Plastic	8
• Connectors	80
• Direct Connect Brass	53
• Direct Connect Plastic	8
• End Outlet Brass	52
• End Outlet Plastic	6
• Slip Joint Brass	53
• Slip Joint Plastic	6
Water Hammer Arresters	24
Water Heater Pans	85

Y	
Yellow PTFE Tape	91

INDEX



JB Products

6851 Enterprise Drive
South Bend, IN 46628
Phone: 800-527-8727
Fax: 574-234-2562

Website: www.jb-products.com

